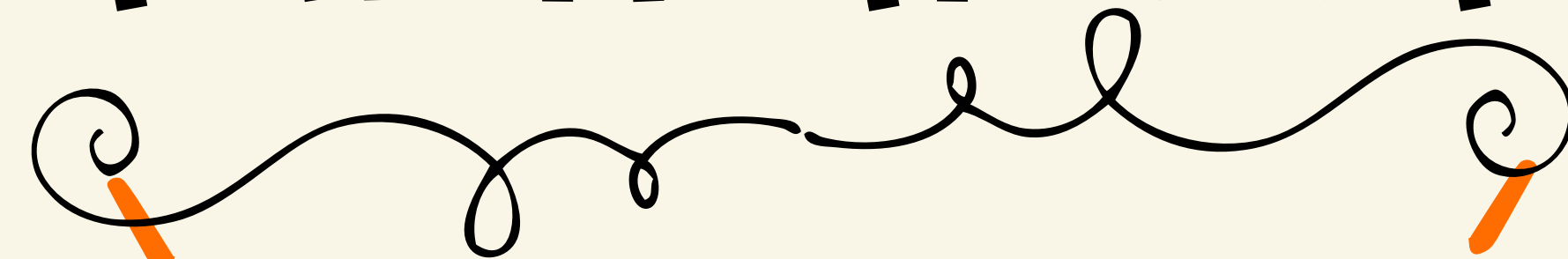


NAME THAT CLAIM



Fun with All the Risks!

Play Now

Team Up!

- Five Teams
- Max of Two from the Same Location
- Choose a Captain (for answers)
- Choose a team name
- Meet People – Have Fun

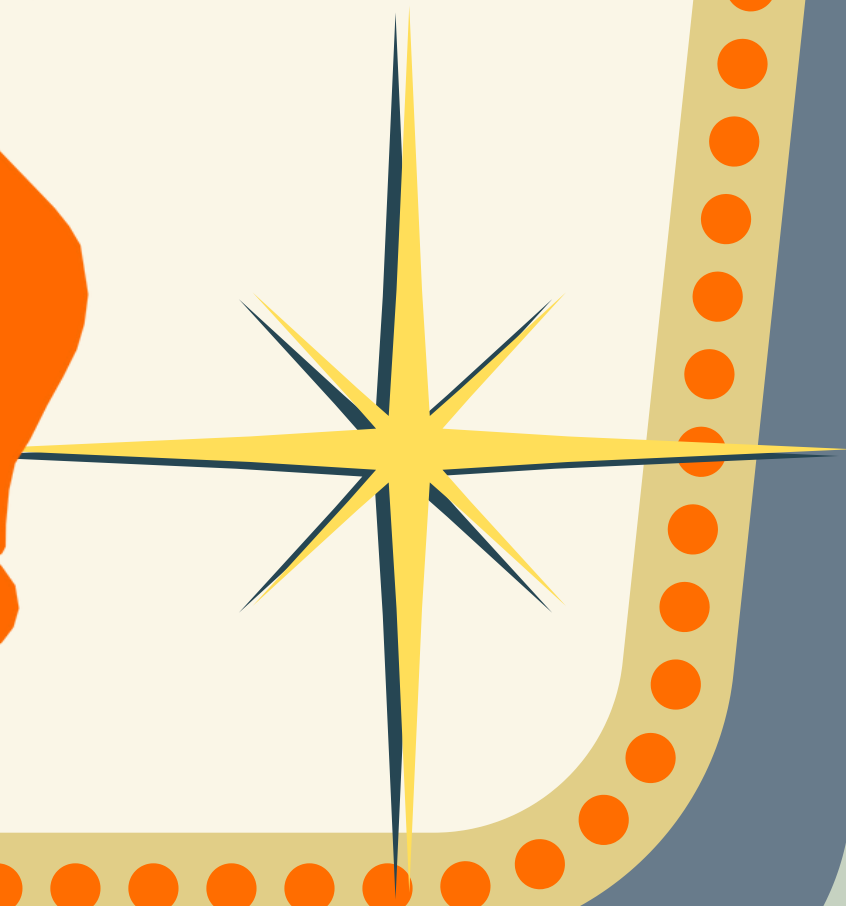
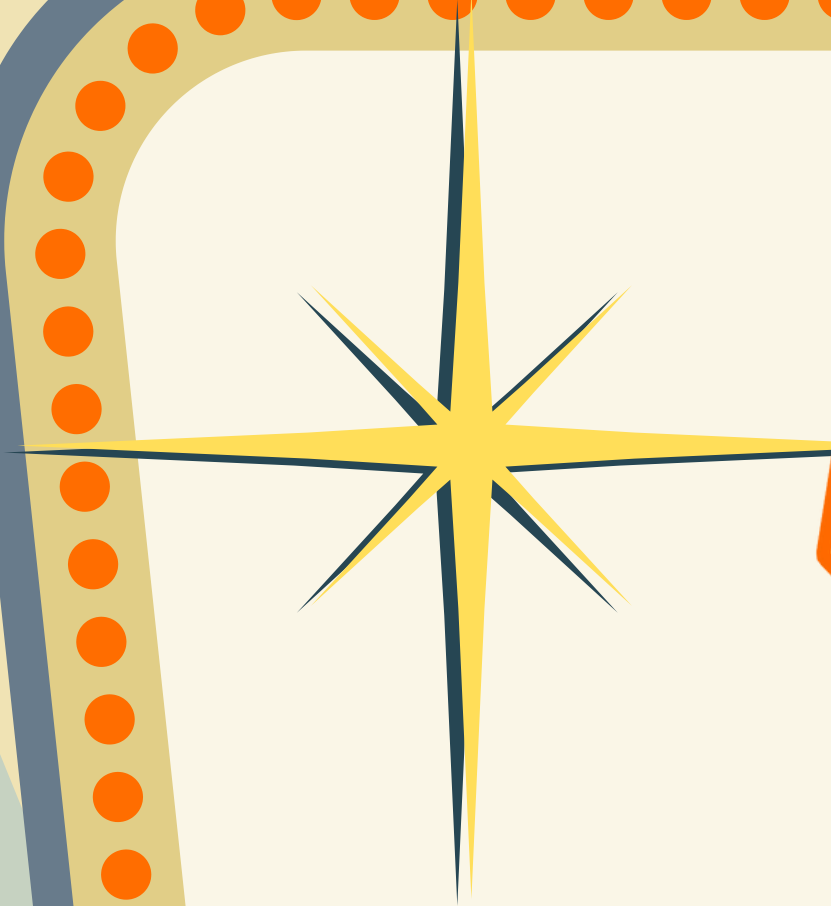
Continue

Game Rules

- No phones or outside help
- One Answer per team per question
- Don't blurt out answer
- 1 point per correct answer
- Most points at the end wins!

Continue

**Are you
ready?**



Category

Claim Basics - Easy Peesy!

Round 1

Name the **SEVEN** Protected Classes.

For a bonus point, name the FL
addition. For another bonus point,
name the dangerous, additional
claim!

The Answers are...

**Race, Gender, Religion,
National Origin, Age, Disability,
Pregnancy
(FL - Marital Status)
BONUS - Retaliation**

Round 1

What the **TWO** primary bases for
premises liability claims?

(Hint - both are S words.)

The Answers are...

**Safety
and
Security**

Round 1

From websites to ramps, this type of claim exhibits challenges for public entities.

The Answer is...

**Public
Accommodation**

Round 1

Don't Throw Shade - this type
of claim keeps us in the
spotlight.

The Answer is...

**Government in
the Sunshine
(Chp. 119 and 286)**

Round 1

If you prevent this type of claim, you take a **BYTE** out of our risk and losses.

The Answer is...

Cybersecurity

Category

Digging Deeper

Round 2

These three words (known by their initials) can make you ill if you are not practicing them.

The Answers are...

**Communication
Documentation
Consistency
(CDC)**

Round 2

Don't get **DOWN**
on each other when there is an issue
or incident - properly evaluate the
matter with these key investigation
factors.

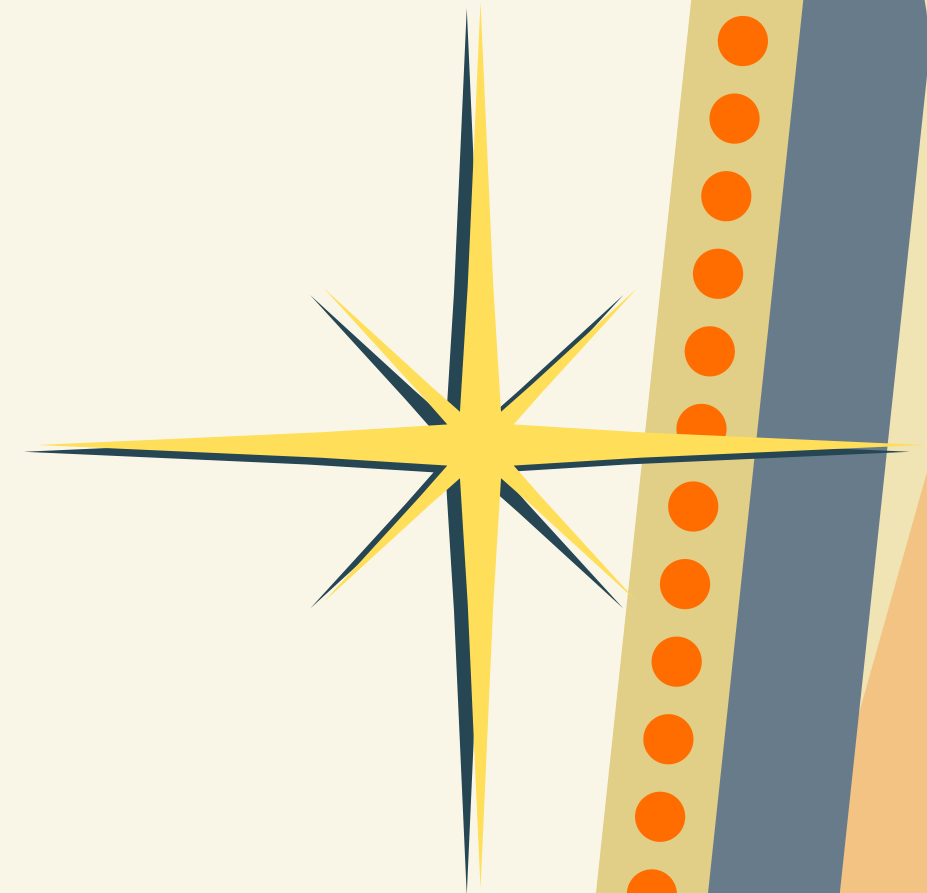
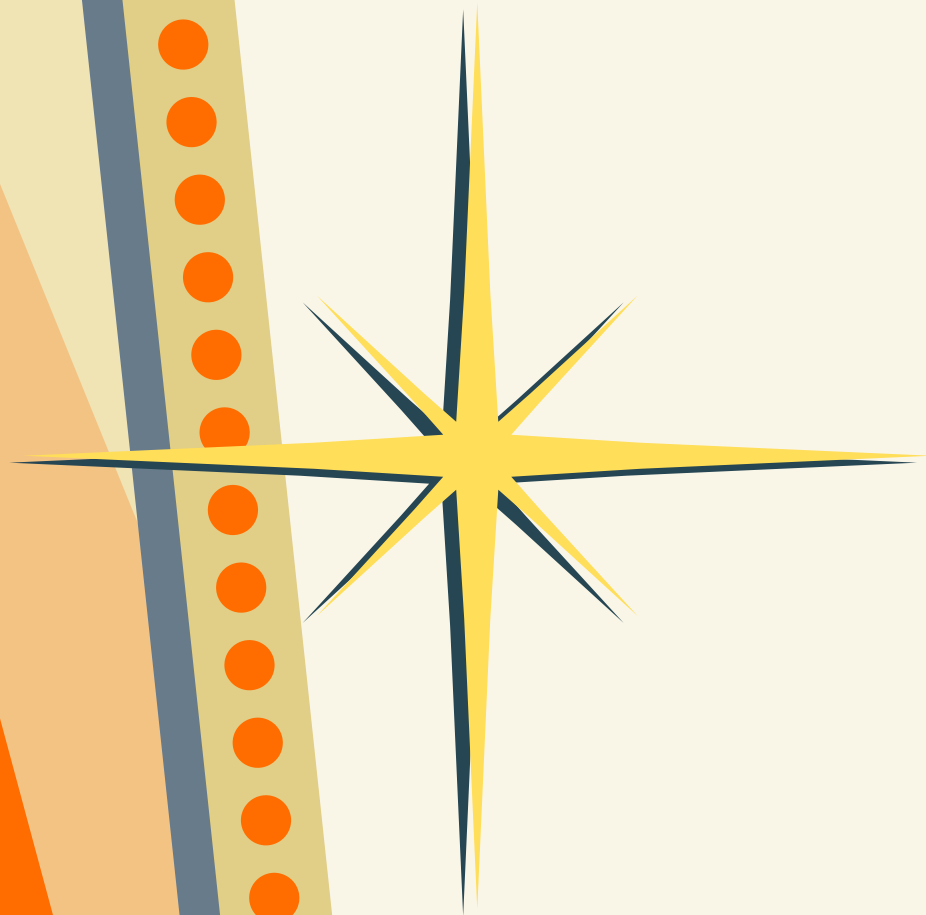
The Answers are...

Documents

Objects

Witnesses

Neutrality

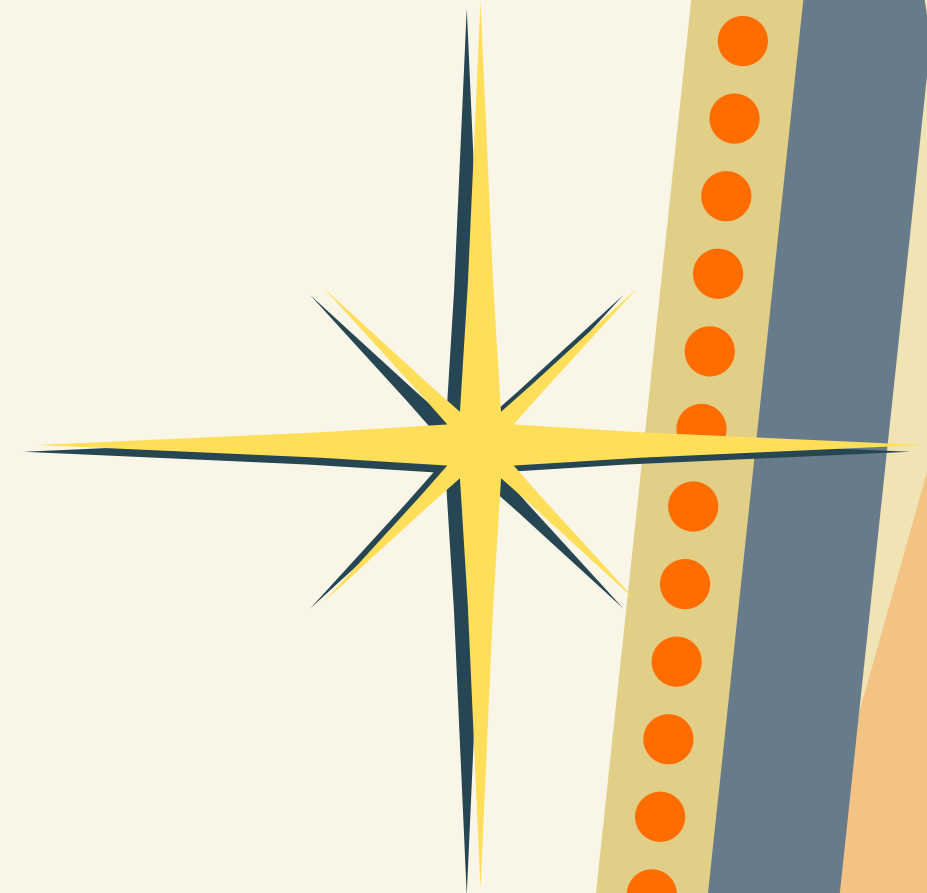
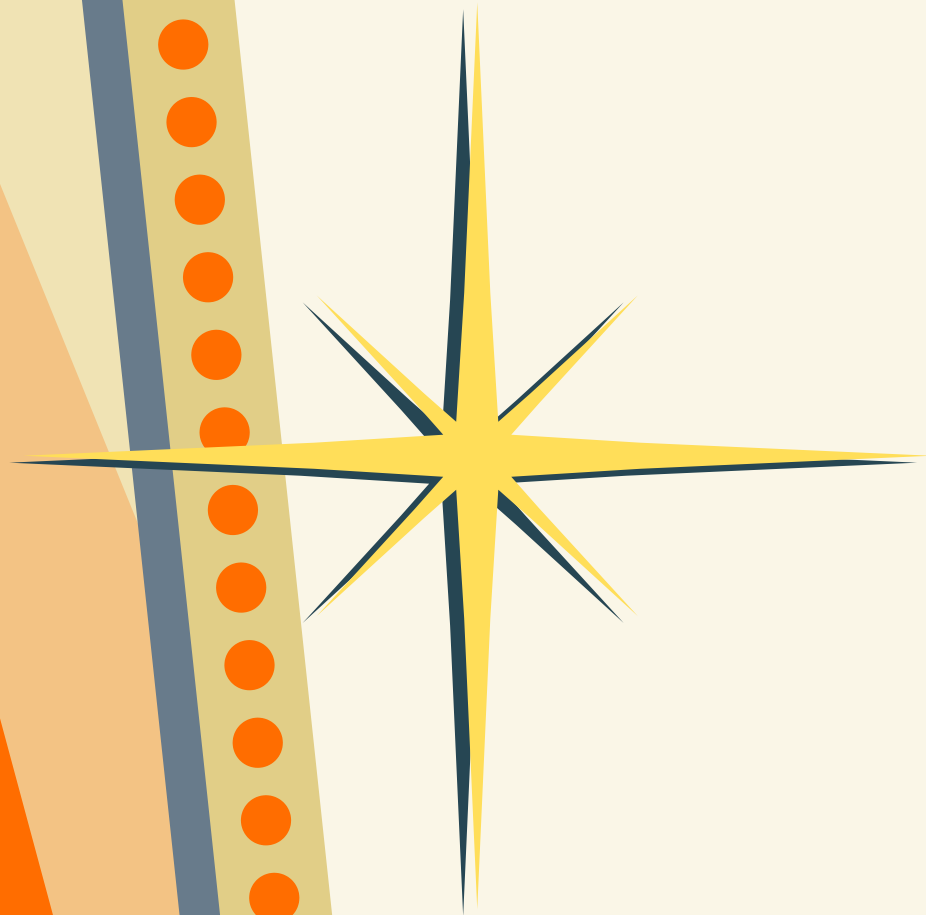


Round 2

Let's be reasonable - these costs can be proper in answering record requests. For a bonus point, what must we do to avoid them costing us?

The Answers are...

**Copying
Personnel
Transport
Location**



Bonus Answer...

1. Receipt confirmation.
2. Proper support and documentation of incurred or estimated costs.

Round 2

The best way to keep a **LOCK** on our cybersecurity is to keep these four proactive actions in mind.

The Answers are...

Login/PW Update
Operate with scrutiny
Confirm the source
Know the people to call

Category

Lightning Round

Round 3

_____ immunity is what
protects the county
(and the the king in earlier times).



The Answer is...

Sovereign

Round 3

A claimant alleging negligence has
XXX years to bring a claim.

Half a year

2 years

4 years

The Answer is...

Four (4) Years

Round 3

Depositions in employment law
claims usually happen XX months
after the issue

3 months

18 months

24 months

The Answer is...

18-24 Months

Round 3

Surveillance systems typically hold
data for XX days.

2 days

180 days

30 days

The Answer is...

30 days

Round 3

An acceptable period to provide records in response to a PRR is

1 week

1 month

6 months

The Answer is...

Could Be All Three

Round 3

Cybersecurity losses are estimated
at _____ for 2024.

\$5 M

\$10 M

\$15+ B

The Answer is...

\$15+ Billion

Score Board

<i>Team</i>	<i>Round 1</i>	<i>Round 2</i>	<i>Round 3</i>
<i>Team 1</i>			
<i>Team 2</i>			
<i>Team 3</i>			
<i>Team 4</i>			
<i>Team 5</i>			

And the winner is....

Team ?????



Thank You!

Hope you enjoyed!