

1000

FRIENDS

of FLORIDA

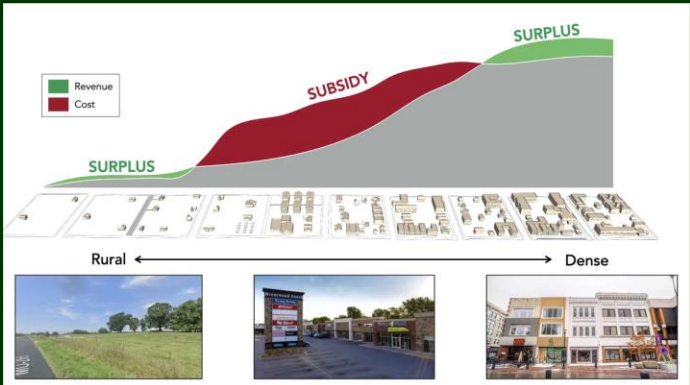
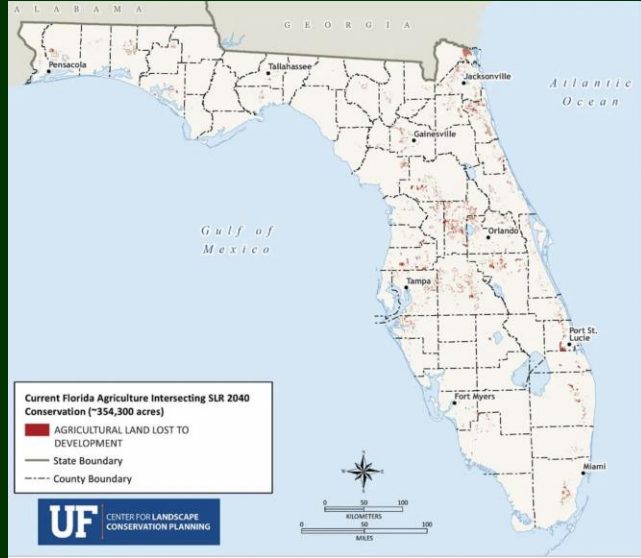
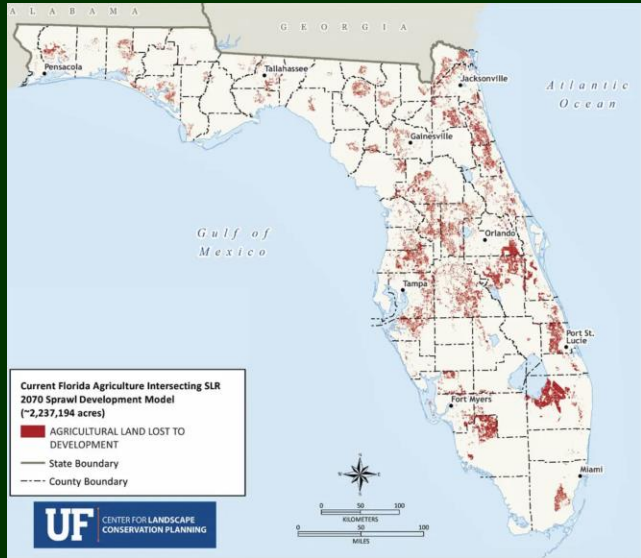
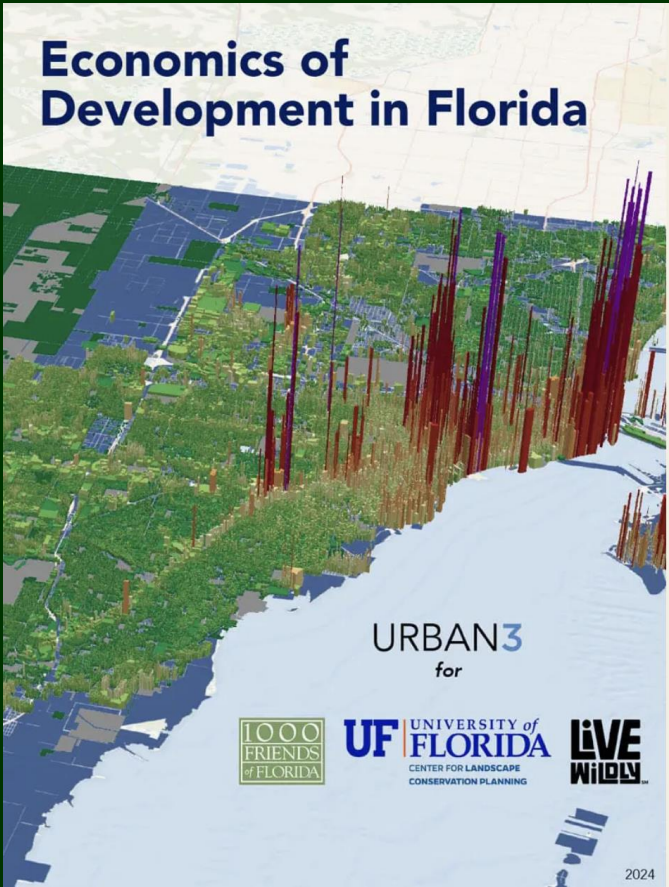


- Florida's leading nonprofit advocate of sustainable development
- Working with citizens, community and state leaders, conservation and business groups
- Building better communities
- Saving special places
- Connecting people with planning



1000 FRIENDS of FLORIDA

- **Legislative Advocacy**
- **Outreach- Webinars, Workshops, Events**
- **Collaborations and Partnerships**
- **Supporting Local Governments and Citizen Planners**



SPECIAL REPORTS

Planning to Protect the

FLORIDA

WILDLIFE

CORRIDOR 2.0



Building Bridges



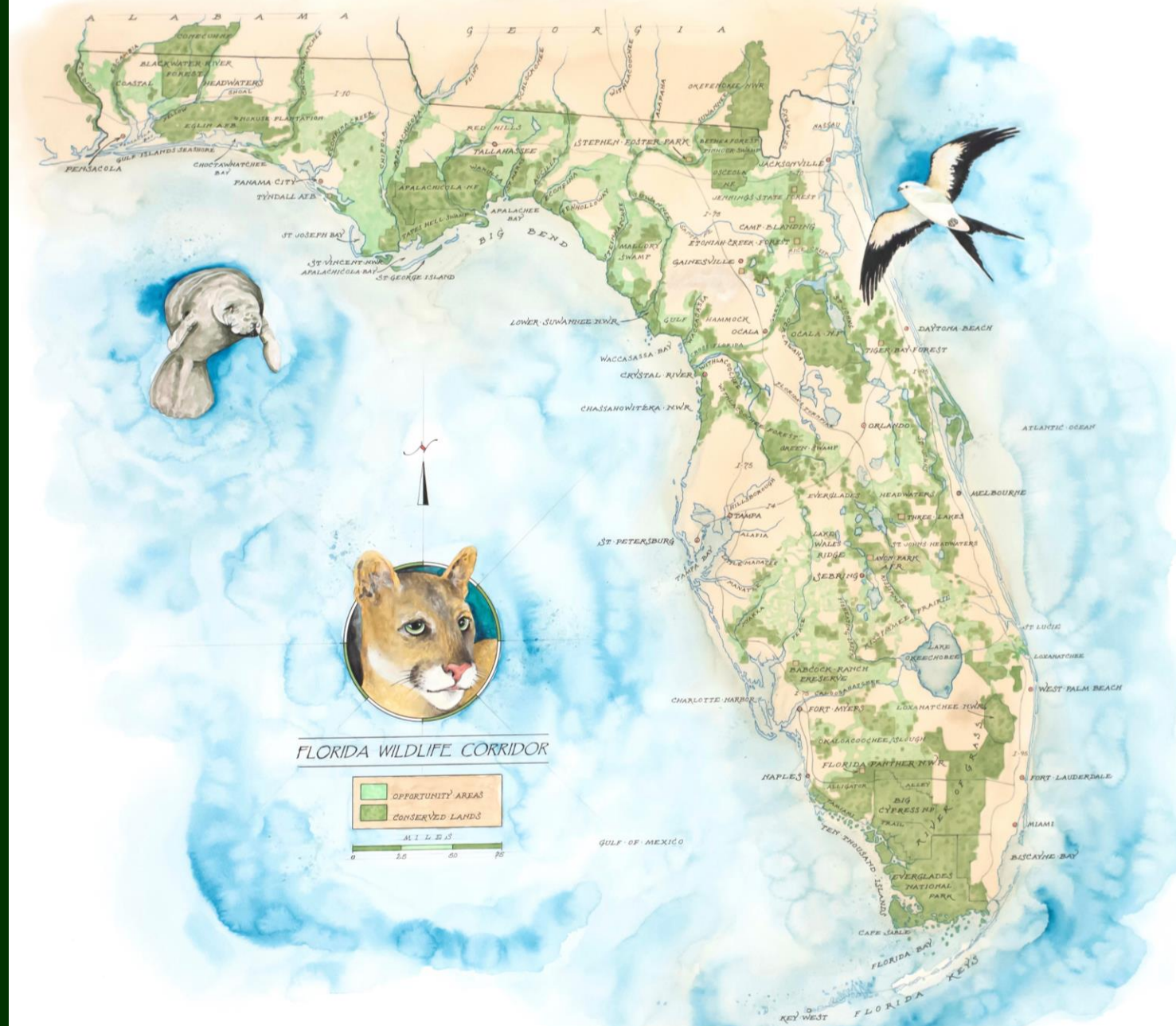
Closing Critical Gaps in the Florida Wildlife Corridor

Jason Lauritsen
Chief Conservation Officer
Jason@floridawildlifecorridor.org



The Florida Wildlife Corridor is an 18 million acre footprint of connected land and water..

..representing our best opportunity to safeguard a biodiverse and sustainable wild Florida for future generations.



Map painting by Michael Reagan



TORI BAKLEY



CARLTON WARD



GRANT BEMIS



CARLTON WARD



CARLTON WARD

Networks of connected and protected areas are inherently more resilient than individual, isolated patches.

Florida Wildlife Corridor Act - 2021

Passed Unanimously

39 (3) PURPOSE.—The purpose of this act, and of the Florida
40 wildlife corridor itself, is to create incentives for
41 conservation and sustainable development while sustaining and
42 conserving the green infrastructure that is the foundation of
43 this state's economy and quality of life by doing all of the
44 following:



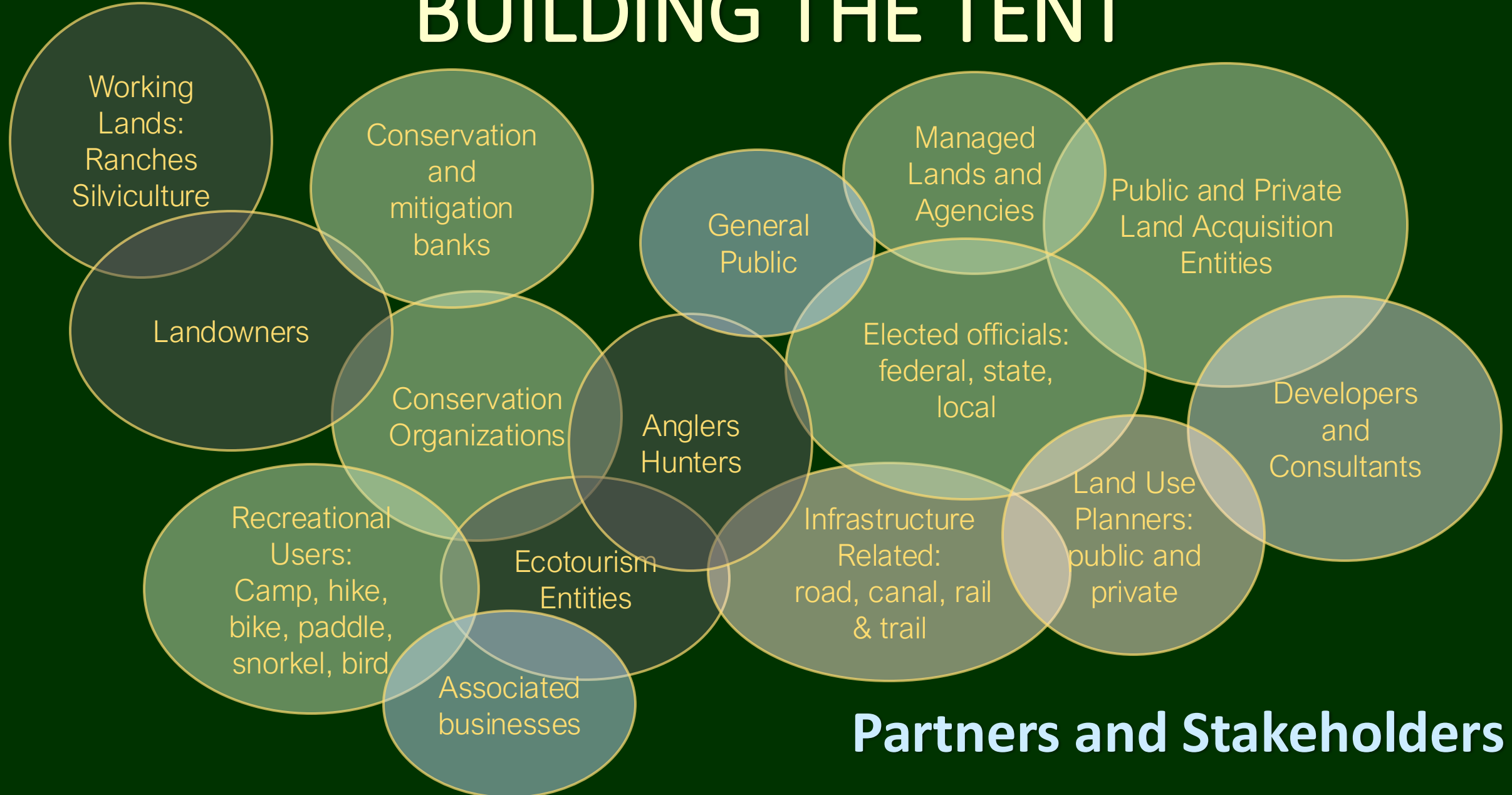
The Florida Wildlife Corridor
“is the foundation of this state’s economy and quality of life”

Florida Wildlife Corridor Act - HB727 SB976

- Defines Conserved Lands and Opportunity Areas
- FDEP shall...
 - Encourage, strengthen, incentivize...
 - Land acquisition
 - Conservation easements
 - Private investment
 - Existing state programs
 - Preservation on private property
 - Novel financing mechanisms
 - Ecotourism
 - and enhancement of the corridor



BUILDING THE TENT



Partners and Stakeholders

RECOGNIZING THE SHARED VALUES

People

High quality of life
Strong local economies

Wildlife

Species diversity
Sustainable robust populations

Habitat

Suitable quality and quantity
Connected

Many of our favorite wild places are too small to support populations without connection.

Without a connected corridor we will see species disappear from our parks and preserves not to return. Species diversity will decline.



114,000 Jobs

\$30 billion annual value

**6x return on investment
protecting Corridor**

The Corridor is home to over 1,700 species
60 of these are considered “at risk”

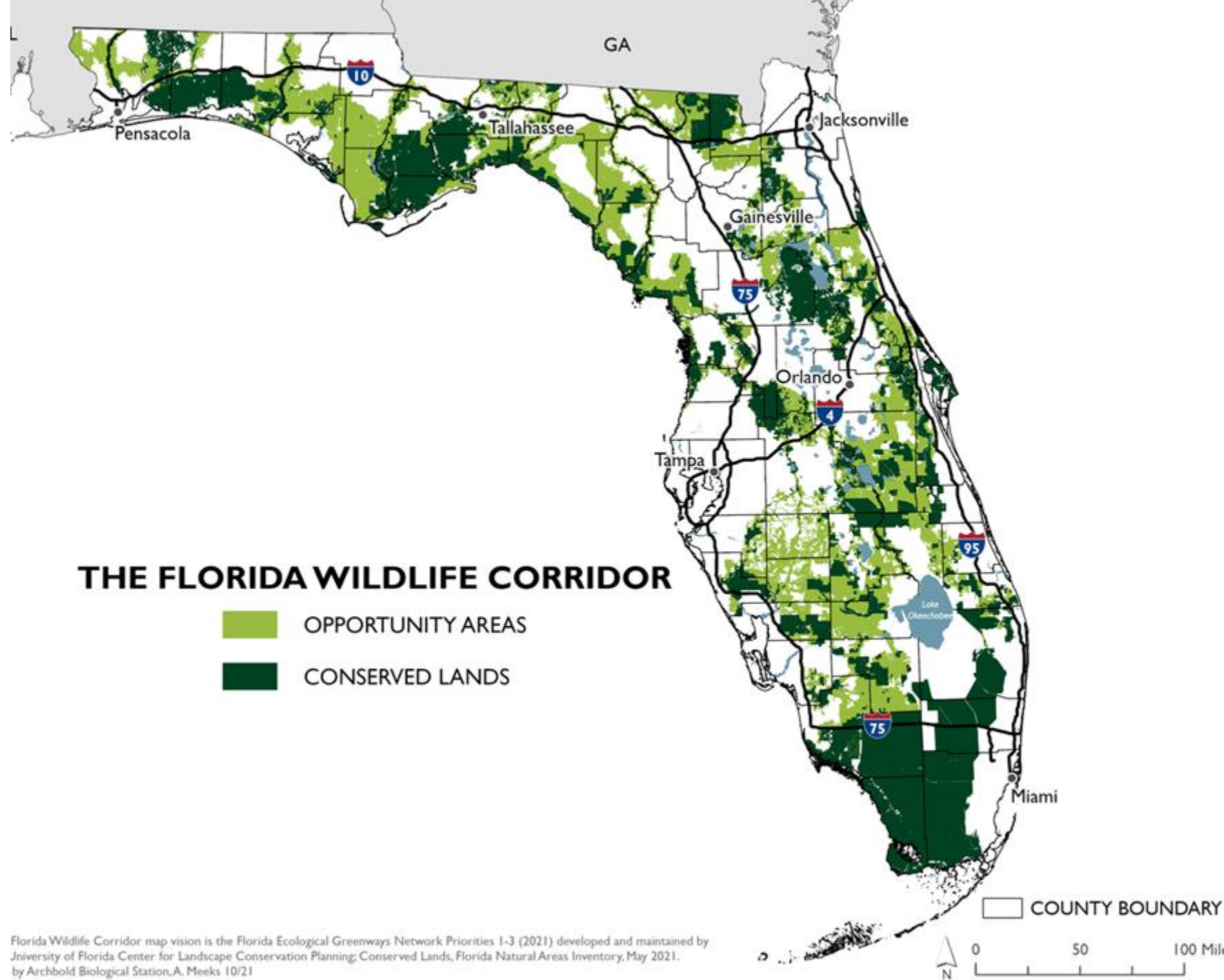


A landscape photograph showing a coastal scrub environment. In the foreground and middle ground, there are numerous palm trees with long, spiky fronds, some of which are yellowed or brown, suggesting dry conditions. The ground is covered with dry, yellowish grass and patches of sand. In the background, more palm trees and some darker green foliage are visible against a sky filled with large, grey, dramatic clouds. The overall scene conveys a sense of a natural, perhaps protected, area.

The Corridor connects...
75 State Parks
32 State Forests
171 mag' 1 & 2 springs

CARLTON WARD

75 State Parks
171 Major* Springs
32 State Forests

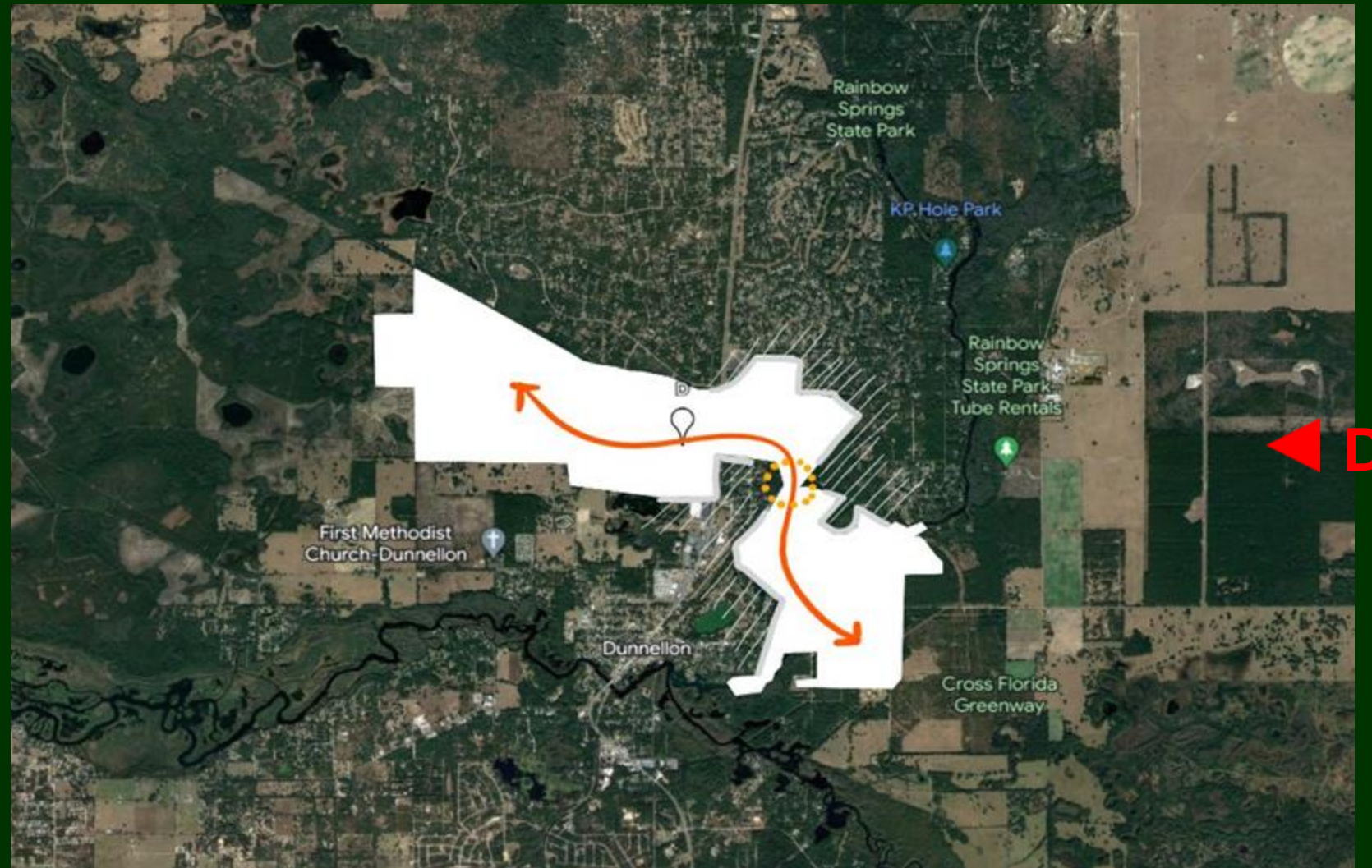




CARLTON WARD

Networks of connected and protected areas are inherently more resilient than individual, isolated patches.

Considerations for Critical Pinch Points



VULNERABILITY



CARLTON WARD

URGENCY

2010 Baseline

Statewide 2010 Baseline

- Developed
- Protected
- Other



2070 Trend

Statewide 2070 Trend

- Developed
- Protected
- Other



2070 Alternative

Statewide 2070 Alternative

- Developed
- Protected
- Other



33 million people by 2070

Connecting, protecting and restoring the Corridor

How we grow makes all the difference. Protecting the Corridor can be done even as our population grows. However, it will require careful and intentional planning around the vital ecological connections illustrated by the Florida Wildlife Corridor.

G▶

Only one viable link
remains across the Lake
Wales Ridge connecting
the Green Swamp and
the Everglades
Headwaters

H▶

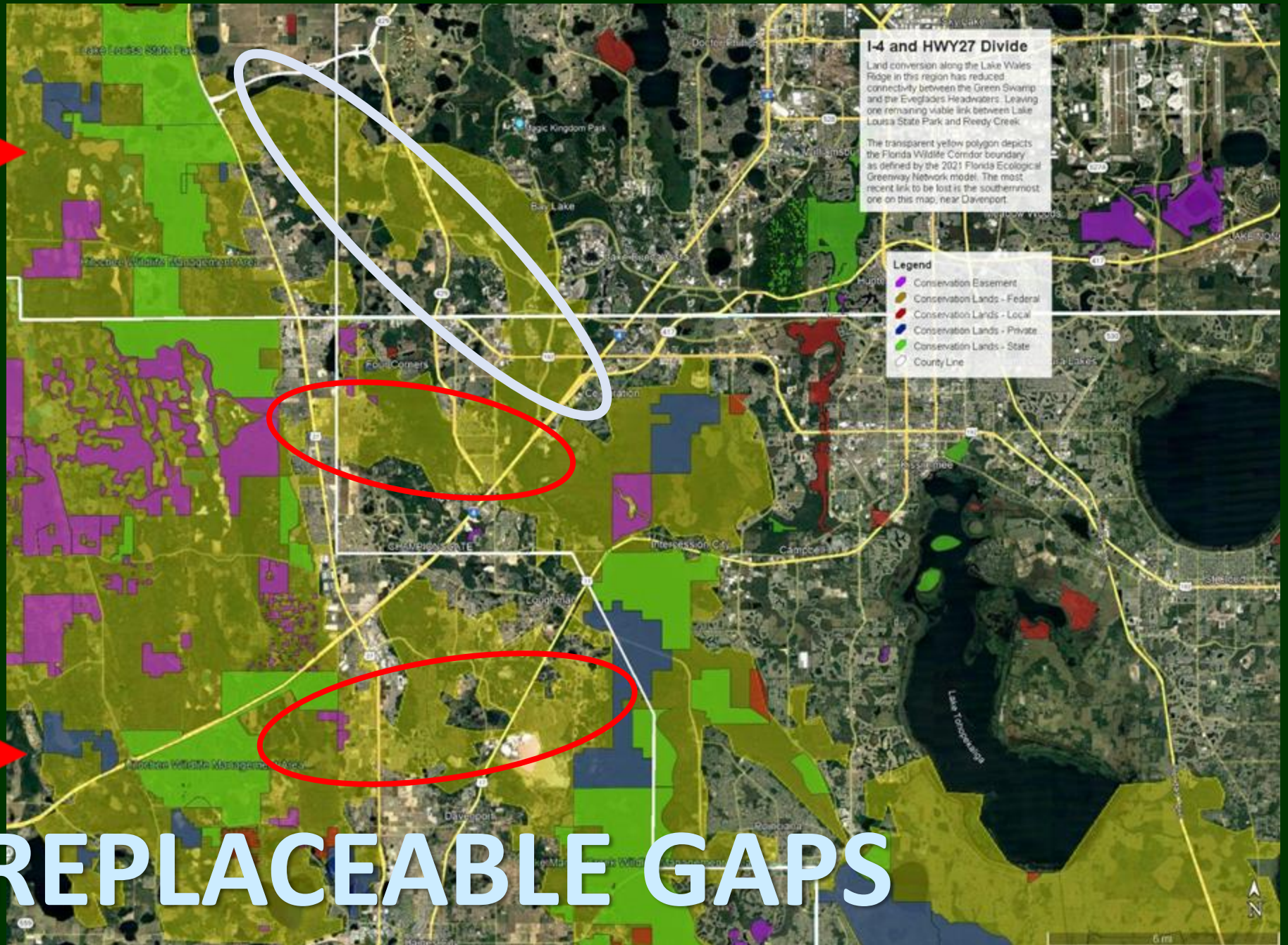
IRREPLACEABLE GAPS



Irreplaceable Gaps –
The Corridor Foundation
has identified numerous
gaps within the Corridor for
which no alternative viable
quality connections have
been identified. Loss of
these Corridor opportunity
areas would have profound
impacts on the Corridor's
ecological function in these
regions.



IRREPLACEABLE GAPS

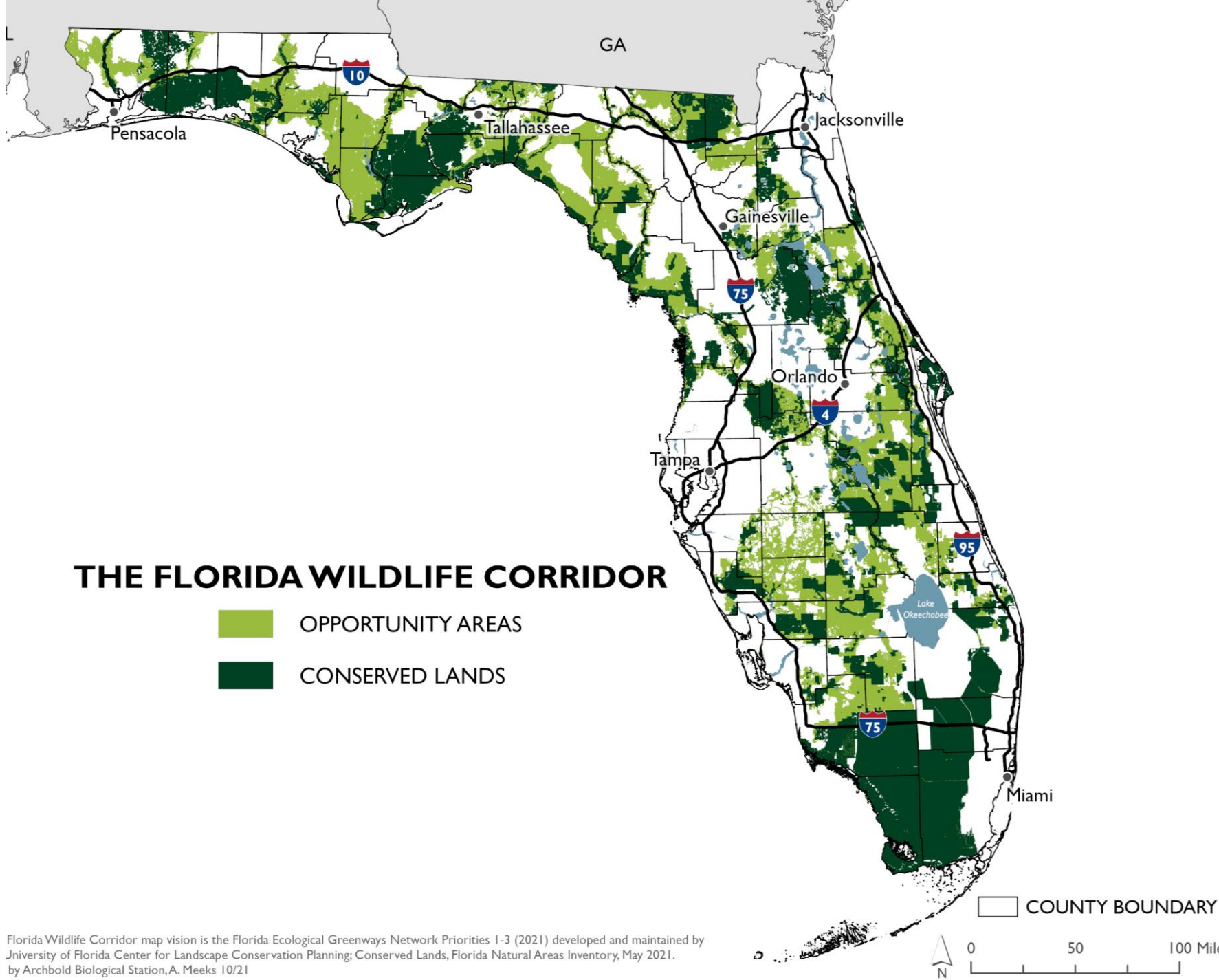


WHAT AND WHERE IS THE CORRIDOR?

18 million acres

10 million acres
protected

8 million acres
unprotected



Scientific foundation

Nodes of concentrated ecological value exist in each landscape at all levels in the biological hierarchy. Integration of these high-quality nodes into a functional network is possible through the establishment of a system of interconnected multiple-use modules.*

Noss & Harris 1986

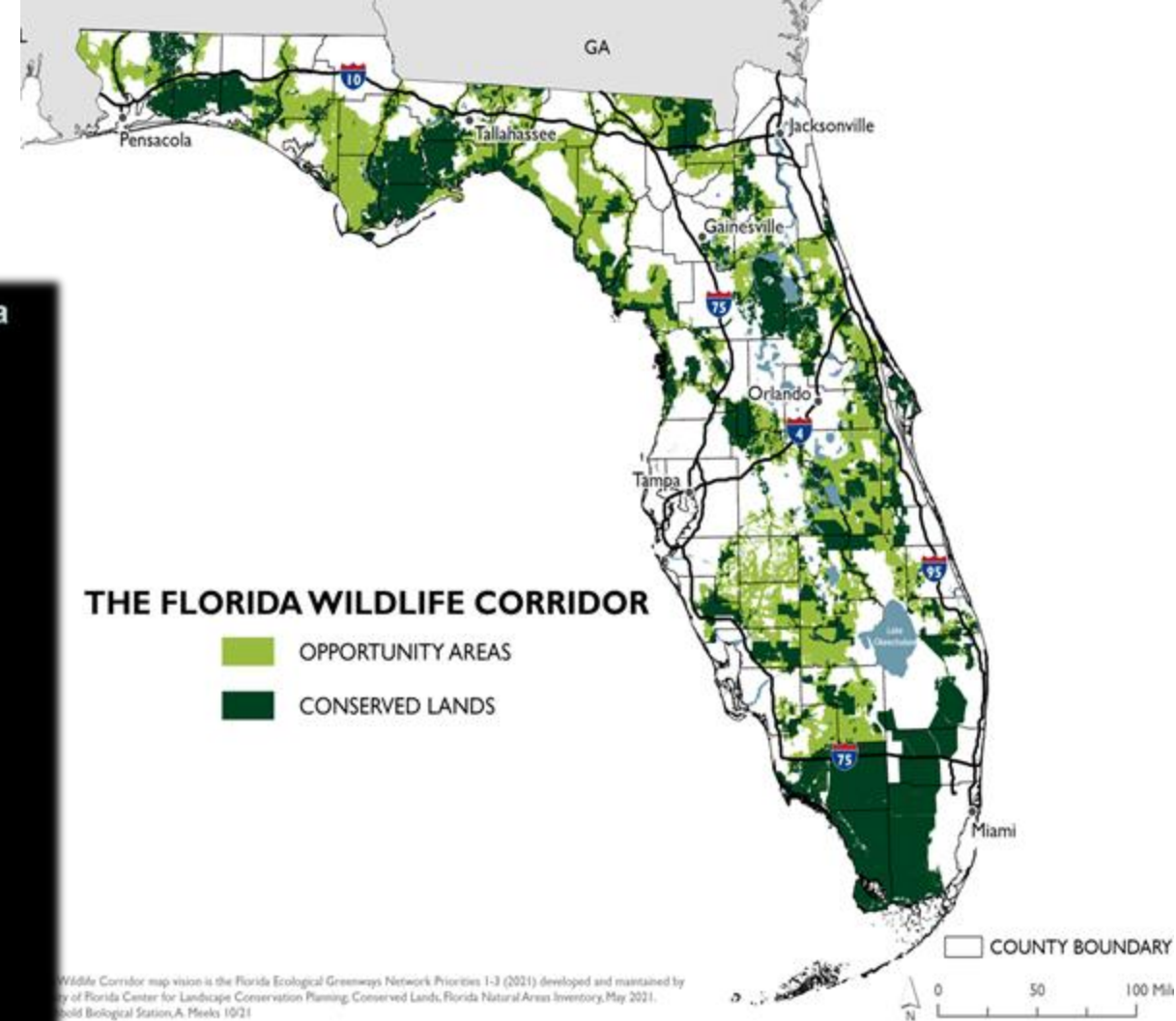
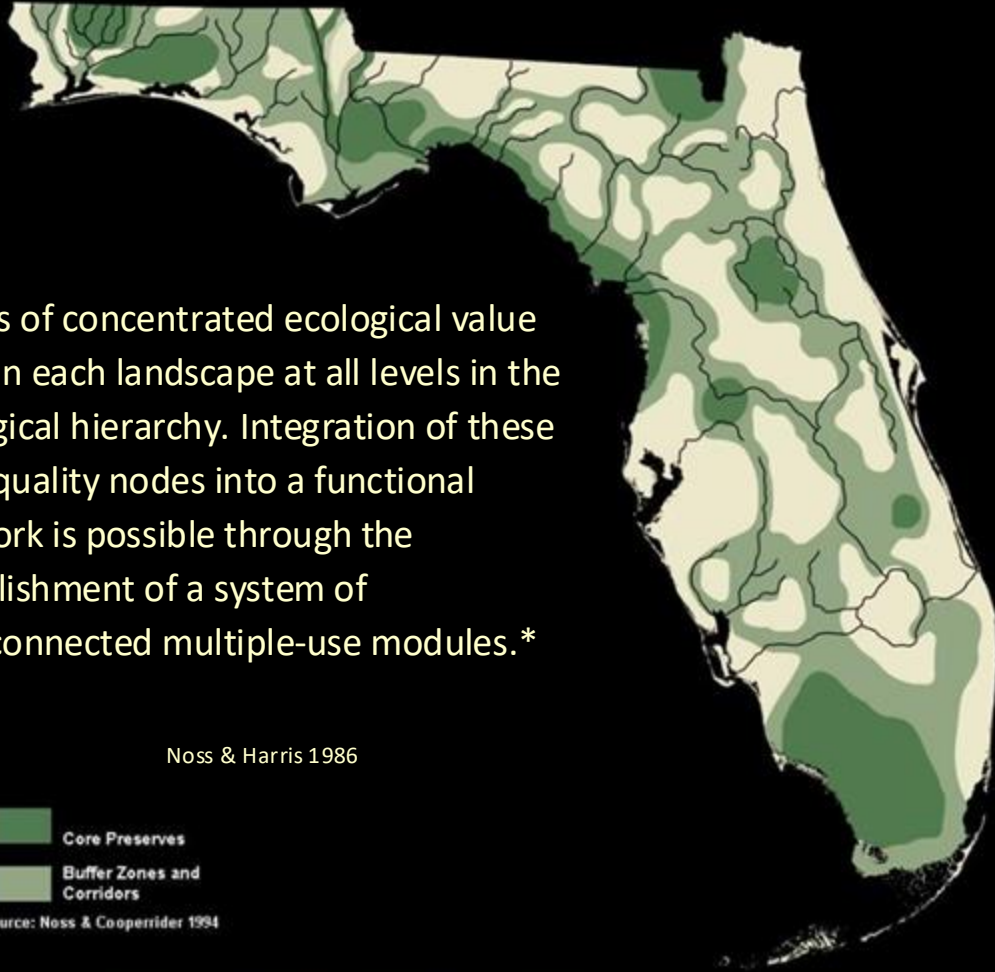


Source: Noss & Cooperrider 1994



Florida 2060: A Research Project of 1000 Friends of Florida

Reserve Network for Florida



The Reserve Network developed by Noss in 1994 preceded and informed the FEGN model.

*Noss, Reed & Harris, Larry. (1986). Nodes, networks, and MUMs: Preserving diversity at all scales. Environmental Management. 10. 299-309.

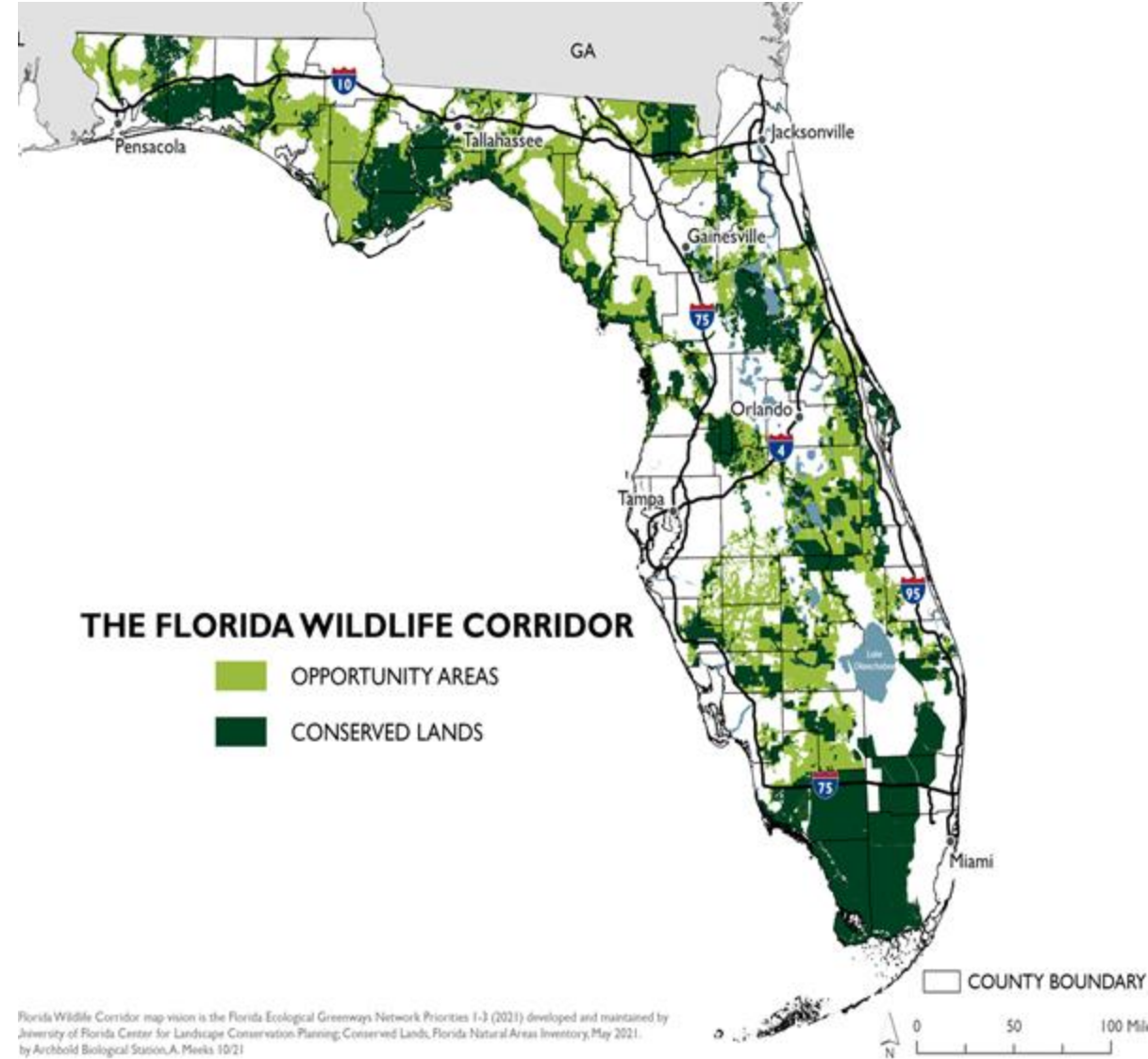
Florida Ecological Greenways Network (FEGN) model

was created using...

- 26 Priority Ecological Area data layers
- 7 connectivity models

Tom Hctor and his team used these data to identify a series of hubs, or core areas, of large, landscape-scale ecological significance, and a network of corridors connecting the hubs into a statewide ecological greenways system.

The Florida Wildlife Corridor is composed of the top 3 priority layers from the FEGN model.



HUBS and Connections

- A useful way to think about the corridor is to consider the **Ecological Hubs as one category** within the Florida Wildlife Corridor, **and the other as the Connections**
- **Florida Forever and the Rural and Family Lands Protection Program** are great State land acquisition programs well suited to identify and acquire the priority parcels that show up as Ecological Hubs.
- **They are not the right solution for many of the Connection areas.**

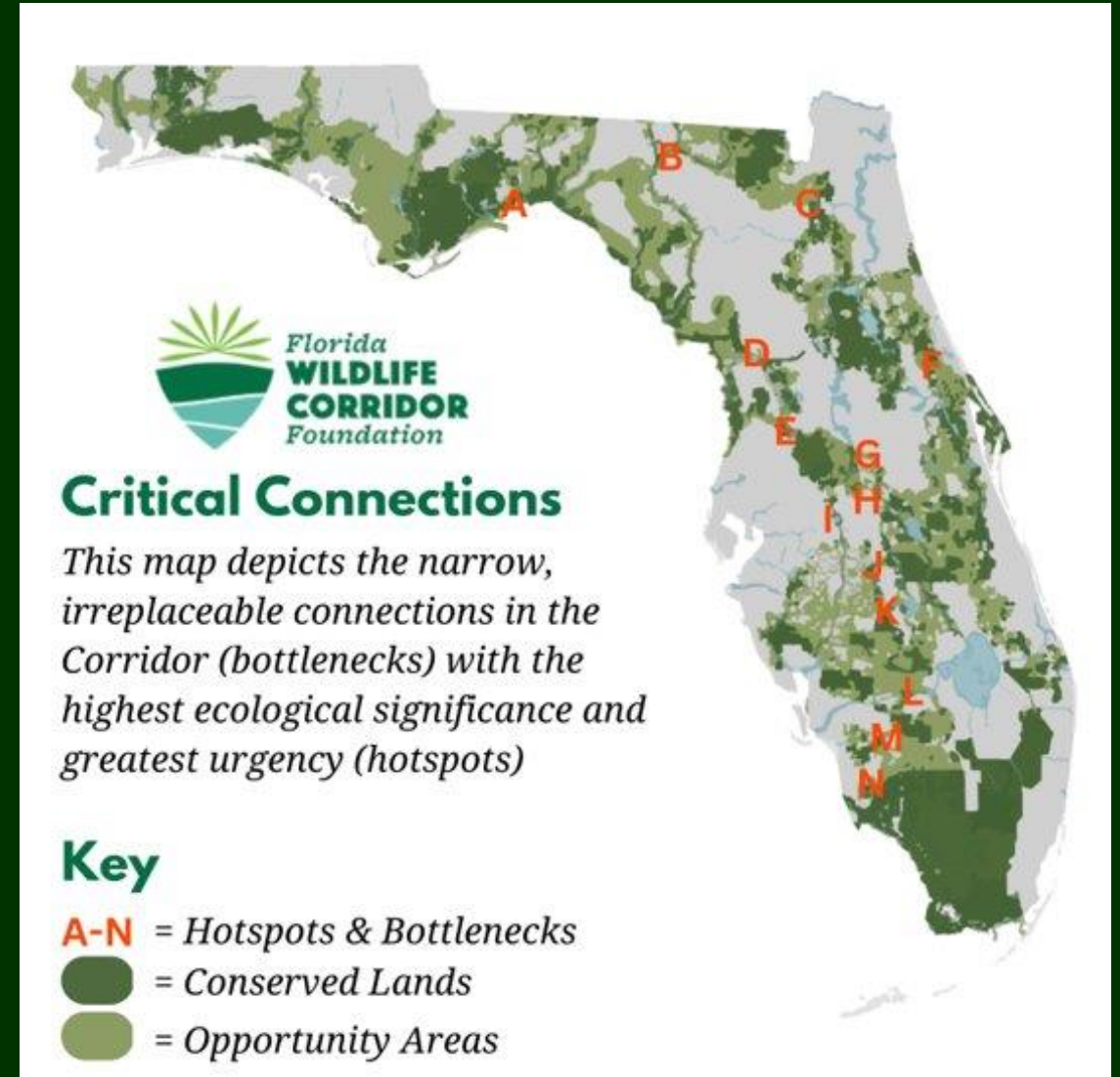
That is where the Mind the Gaps effort comes in...

- The goal is to..
- Advance and accelerate conservation solutions aimed at closing complex priority gaps in the Corridor through collaborative local engagement.
- Introduce and apply planning tools and approaches
- Identify where the most pressing needs are in these gaps to inform future efforts.

Urgent and Vulnerable Connections

Looking through the “*could do*” to find the “*should do*”!

- Rapid growth at the urban boundary
- Major Intersections
- Shifts in agriculture
- Narrow geometry
 - Narrow strips and edge pieces
- High quality habitat
- Listed species, endemics
- Hydrologic features



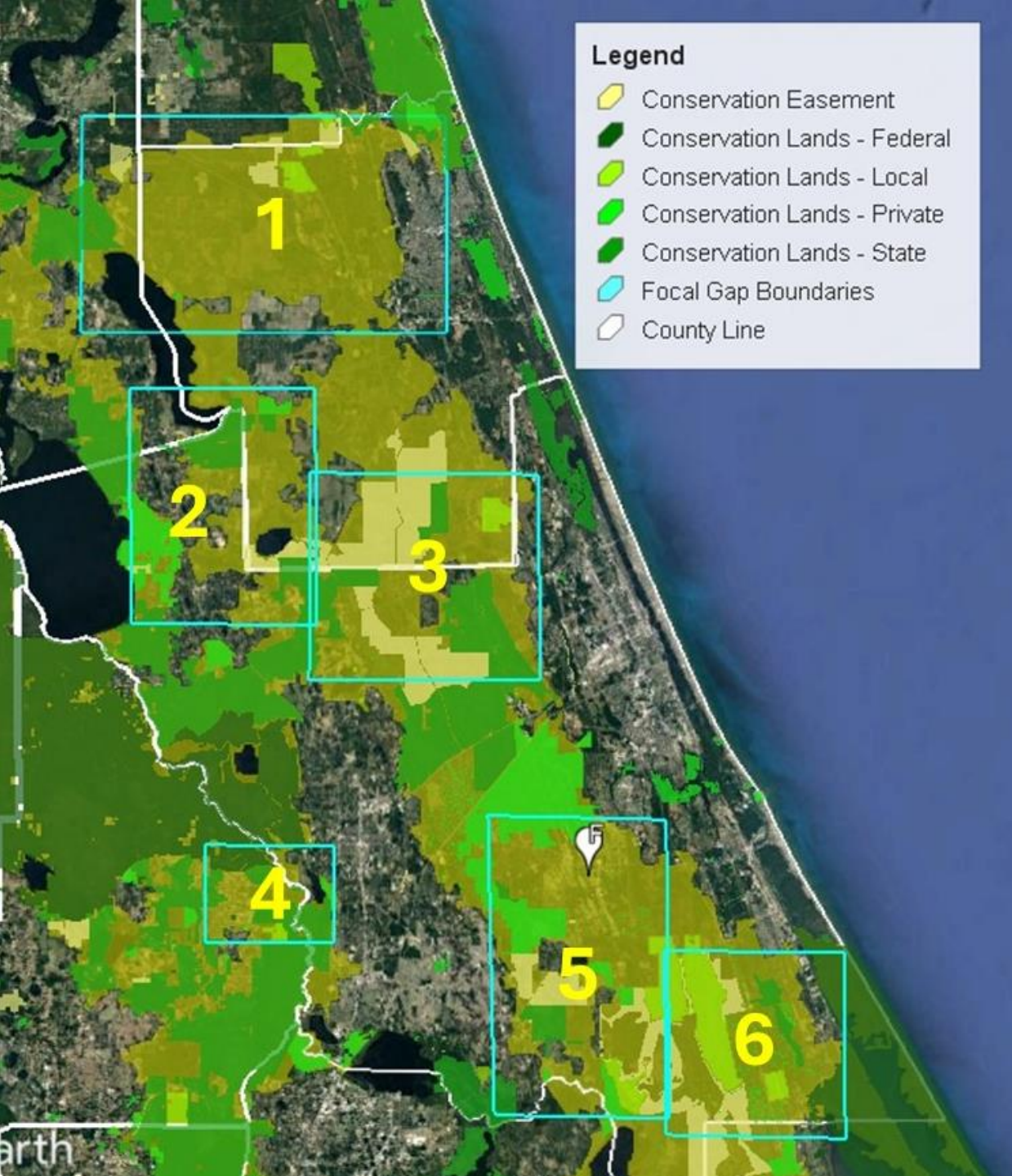
Patch size – Large? Well connected? Or both?

Ecosystems are more resilient when conserved in large, unfragmented areas.* Generally...

- Isolated habitat patches need to be larger than patches that are connected in order to sustain biotic communities.**
- The ability to recover from a catastrophic episode (hurricane, severe fire, flood, drought) is a resiliency goal. Patch size and connectivity factor into resilience.
- If your habitat patch size decreases, connectivity to the remaining patches becomes more important.

***Walker and Salt
2006**

****Rolstad 1991**



1. What is necessary

...key landscape features

...tools and layers

2. What is Possible

...local knowledge & levers

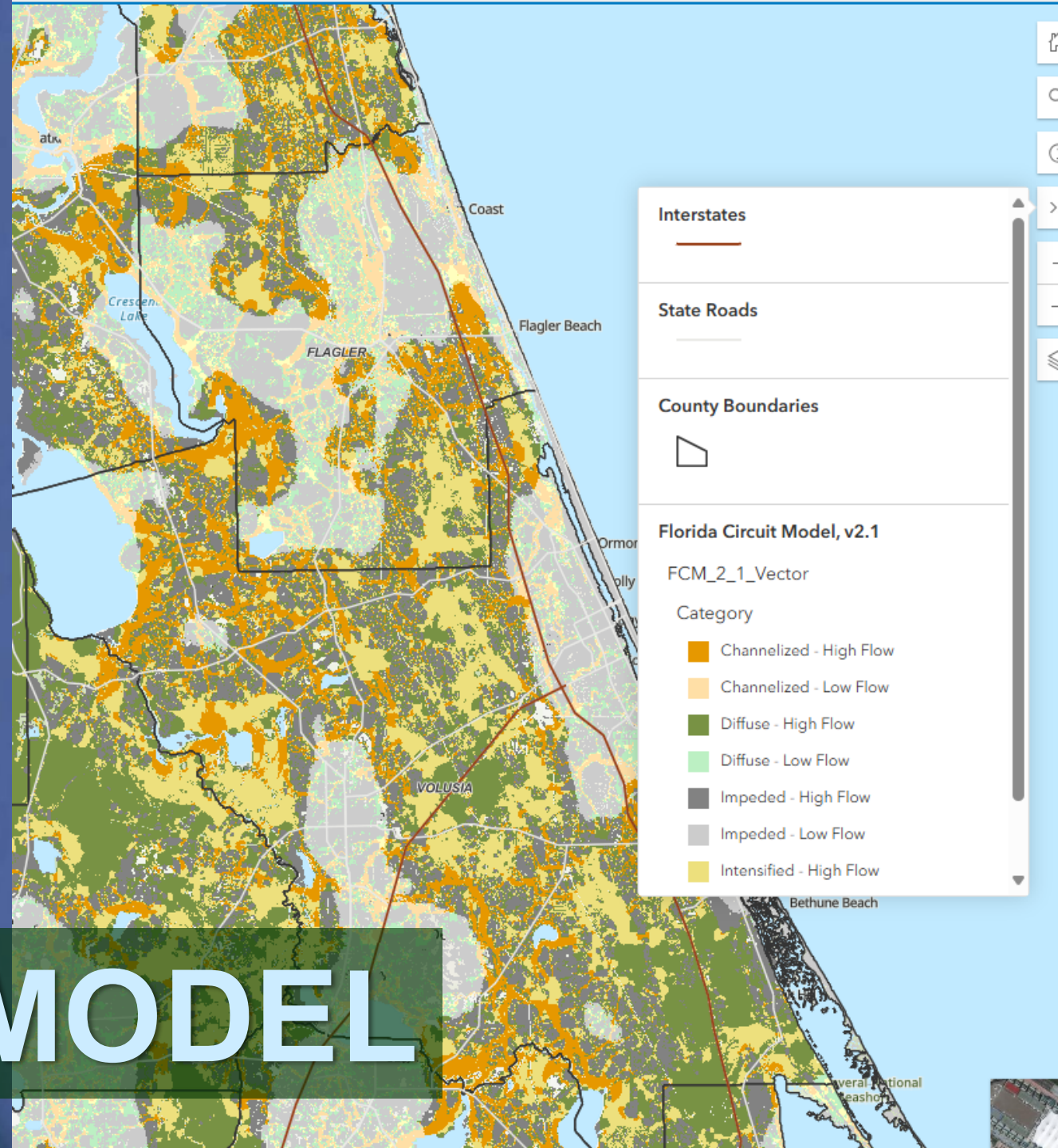
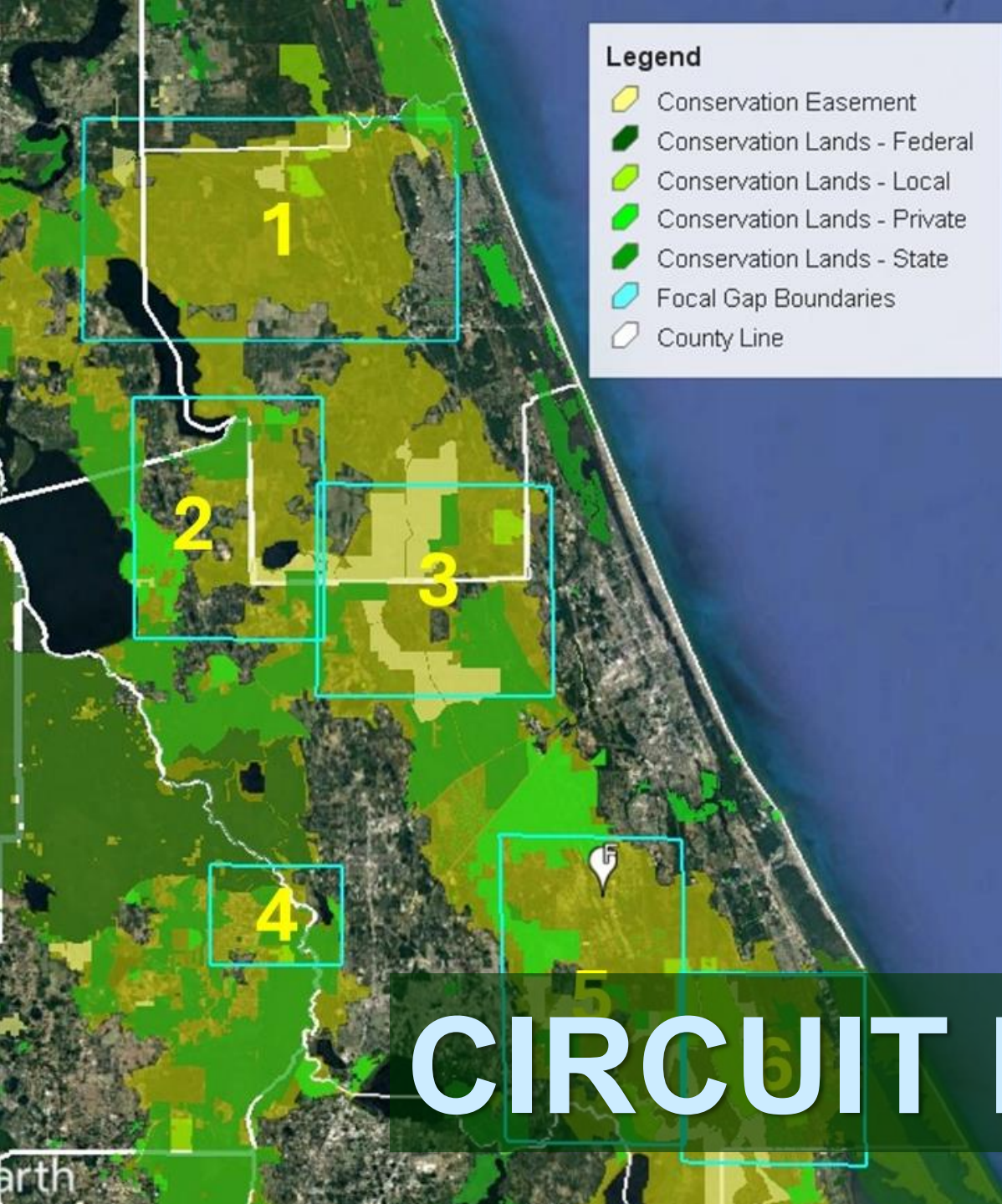
4. What is practical

...what, who, and how

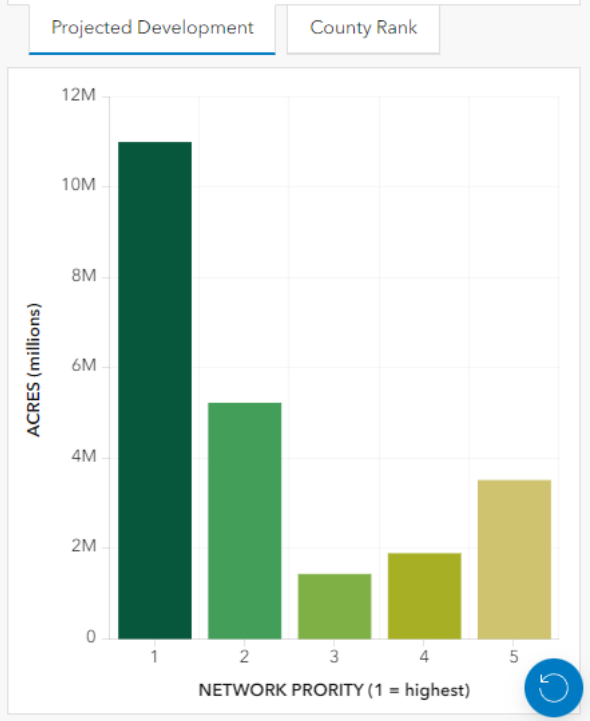
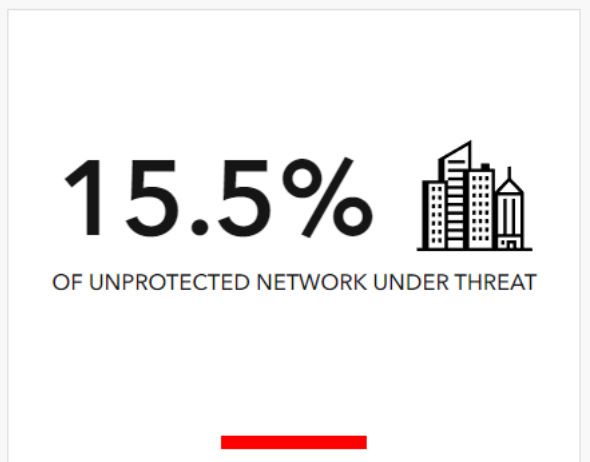
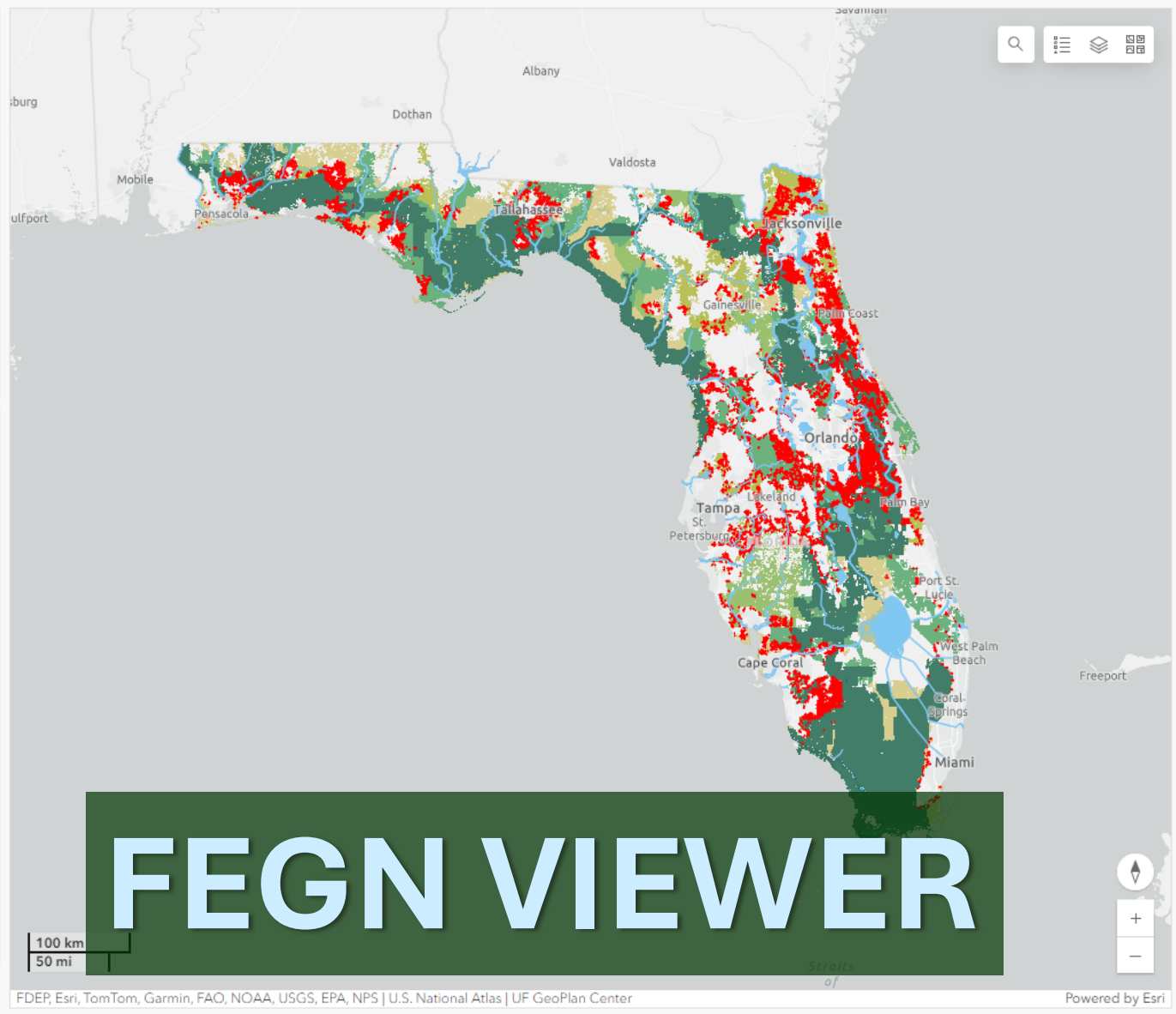
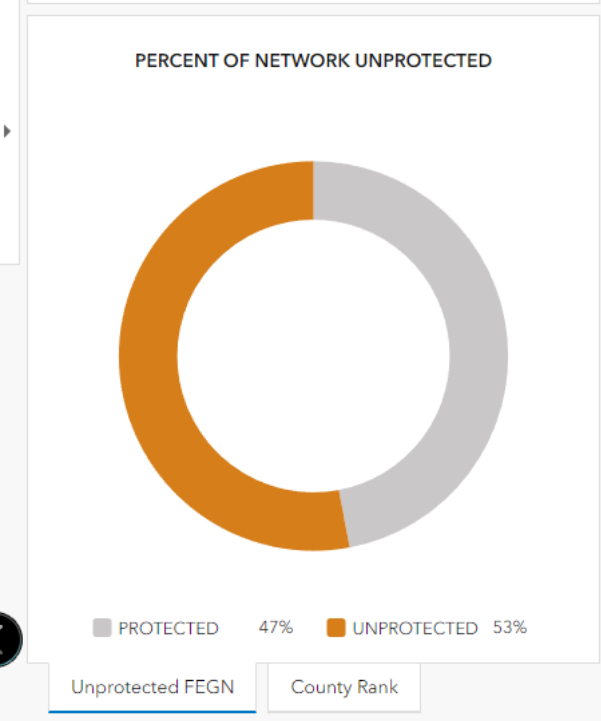
Exploring Corridor Connect

What is the Corridor Connect platform and toolbox?
How can we use it to help us mind the gaps?





CIRCUIT MODEL



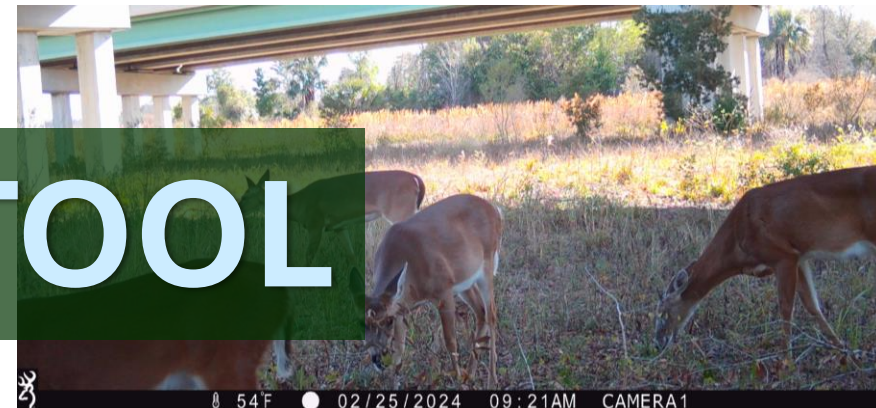
Environmental Screening Tool (EST)

<https://etdmpub.flas-etat.org/est/>



• Publicly Available Data Layers for Planning around the Wildlife Corridor:

- Florida Wildlife Corridor
- FDOT Five Year Work Program
- Statewide Parcel data
- FDOT Wildlife Crossings
- FWC Florida Black Bear Road Mortality
- FWC Bear Crossing Sign Locations
- FWC Panther Mortality
- Florida Panther Least Cost Path
- Florida Panther Corridors
- ARC Lands and Conservation Layers
- Wildlife Hotspot Data
- Bridge Crossing Survey
- Potential Bear Underpasses

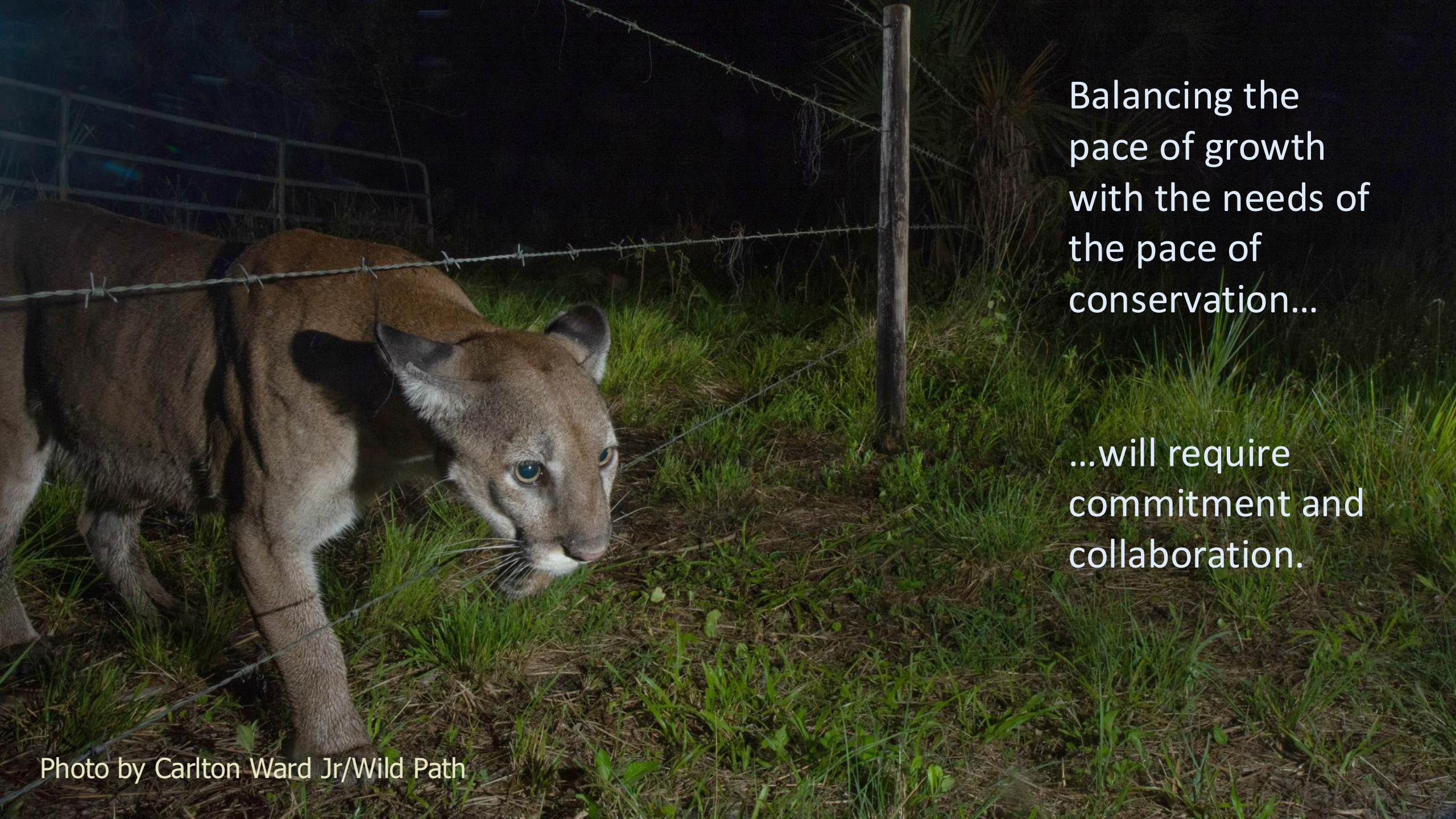


FDOT ONLINE TOOL

Ecological Lever	Conservation (Species) Banking	Mitigation Banking	Florida Forever - Fee Simple	Florida Forever - Conservation Easement (CE)	Rural & Family Lands Protection Program (RFLPP)	Other Acquisition Mechanism	FL Communities Trust	Land Donation	Carbon Market	Agritourism (includes hunting/fishing)	Ecotourism	Payment for Ecosystem Services (PES) (non-carbon, esp water)	Corridor Compatible Communities (undefined)	Corridor Compatible Solar
Natural Cover														
Ranching														
Silviculture														
Groves														
Residential (low density)														
Water														
Crops														
Greenspace														
Open Land														

strategy potentially applies to land use category
 strategy potentially applicable in limited situations
 strategy not applicable to land use category

CONSERVATION LEVERS



Balancing the
pace of growth
with the needs of
the pace of
conservation...

...will require
commitment and
collaboration.

Photo by Carlton Ward Jr/Wild Path

Follow, Share, Give, Join the Movement!



@FloridaWildlifeCorridor



Florida Wildlife Corridor Foundation



@FloridaWildlifeCorridor



/FloridaWildlifeCorridor

**Donate
Today**



An aerial photograph of a dense, lush green forest. A river with a muddy, brownish-orange hue winds through the forest, forming several loops and meanders. The river's path is clearly visible against the vibrant green of the trees. In the center of the image, the words "THANK YOU" are written in a large, white, sans-serif font.

THANK YOU