

Charlotte County Human Services

OUR MISSION: TO COLLABORATE AND PROVIDE PROGRAMS AND CONNECTIONS THAT INCREASE FINANCIAL STABILITY AND SUPPORT INDIVIDUALS AND FAMILIES AS THEY WORK TO REACH THEIR FULLEST POTENTIAL.

MUNICIPALITIES:

1-City of Punta Gorda



Population
194,843



Average
59.7



Employment Rate
39.4%



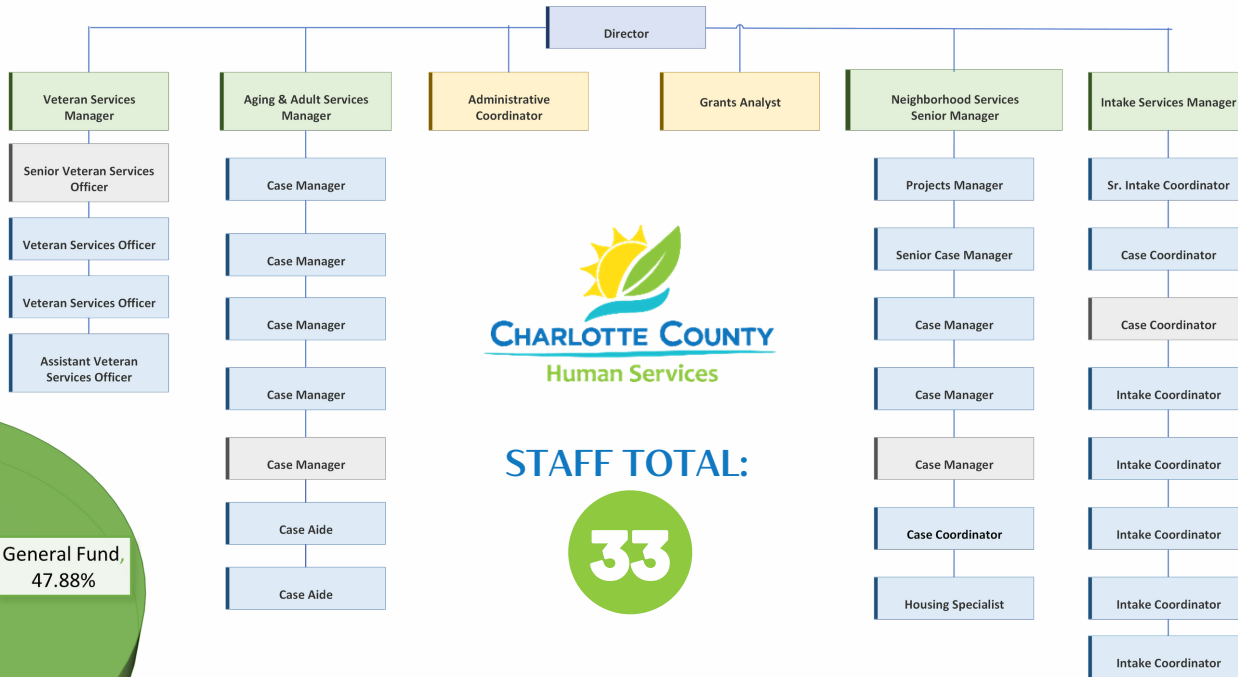
Median Income
\$57,887

census.gov

DIVISIONS:

1. Administration
2. Aging & Adults Services
3. Intake Services
4. Neighborhood Services
5. Veteran Services

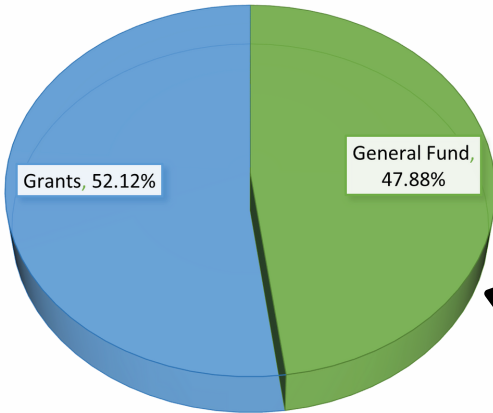
ORGANIZATIONAL CHART



STAFF TOTAL:

33

BUDGET:



APPROX. \$10M

ADMINISTERED GRANTS

Grants	Granting Agency
ADI (Alzheimer's Disease Initiative)	Area Agency on Aging
Civil Citation	Florida Department of Juvenile Justice
CCE (Community Care for the Elderly)	Area Agency on Aging
CSBG (Community Services Block Grant)	Department of Economic Opportunity (DEO)
EHEAP (Emergency Home Energy Assistance Program)	Area Agency on Aging
HCE (Home Care for the Elderly)	Area Agency on Aging
LIHEAP (Low Income Home Energy Assistance Program)	Department of Economic Opportunity (DEO)
LIHWAP (Low Income Household Water Assistance Program)	Department of Economic Opportunity (DEO)
OAA (Older Americans Act)	Area Agency on Aging
SHIP (State Housing Initiative Partnership)	State of Florida, Florida Housing Finance Corp
TANF (Temporary Assistance for Needy Families)	Gulf Coast Partnership (GCP)

DIRECTOR:

CARRIE WALSH

carrie.walsh@charlottecountyfl.gov

Phone: 941-833-6501

www.charlottecountyfl.gov

UNIQUE STRENGTHS

- Family Services Center
- Integrated Client Services Model
- Non-Profit Relationships

UNIQUE CHALLENGES

- Large Elderly Population
- No Fixed Route Transit System
- No Hurricane Shelters

Pasco County Community Services

MUNICIPALITIES:

1. Port Richey
2. New Port Richey
3. Dade City
4. Zephyrhills
5. Saint Leo
6. Wesley Chapel
7. Odessa
8. Land O' Lakes
9. Hudson
10. Aripeka
11. Lacoche
12. Holiday
13. Crystal Springs
14. San Antonio



OUR MISSION: ALIGNED WITH PASCO COUNTY'S VISION OF BEING FLORIDA'S PREMIER COUNTY FOR BALANCED ECONOMIC GROWTH, ENVIRONMENTAL SUSTAINABILITY, AND FIRST-CLASS SERVICES, WE PROVIDE HIGH-QUALITY, COST-EFFECTIVE SERVICES TO PASCO COUNTY RESIDENTS AND VISITORS.



Population
608,794



Average
45



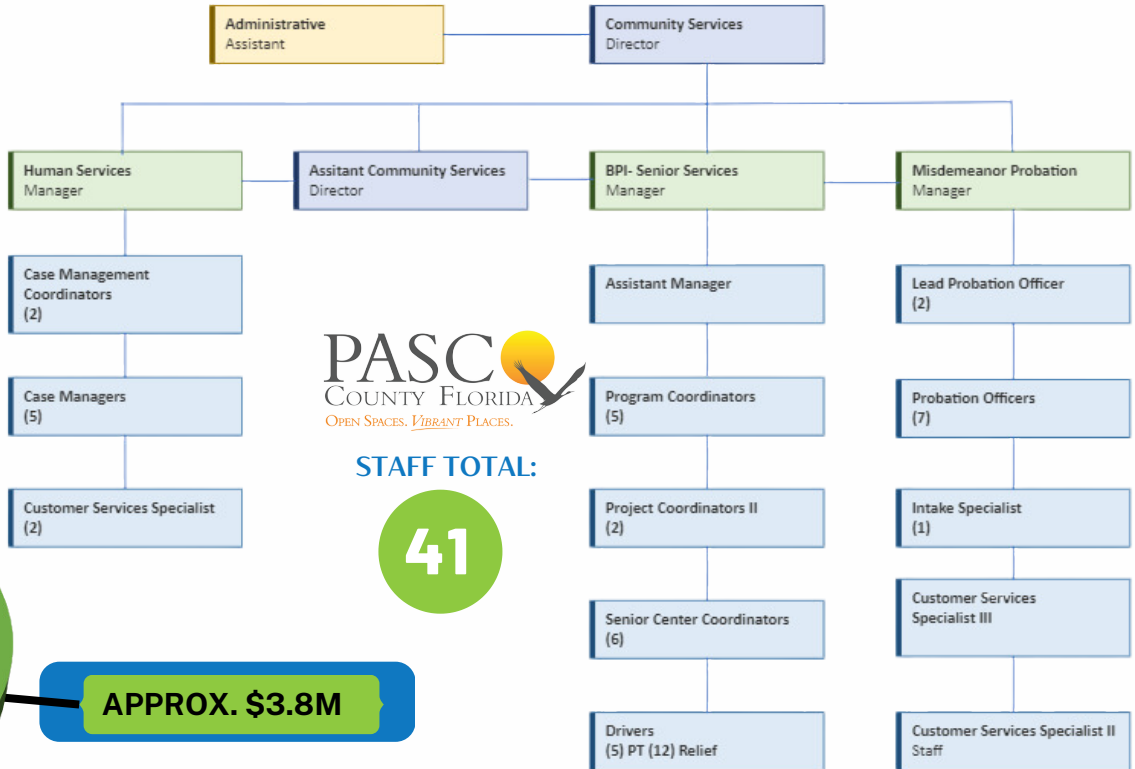
Poverty Rate
8.4%



Median Income
\$58,084

census.gov

ORGANIZATIONAL CHART



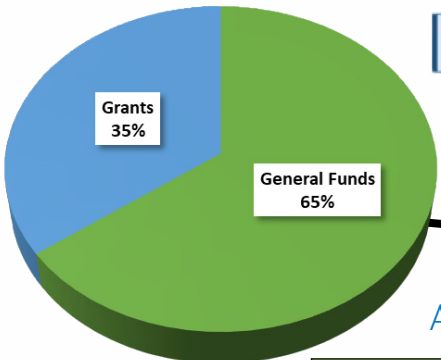
STAFF TOTAL:

41

DIVISIONS:

1. Human Services
2. Senior Services
3. Misdemeanor Probation

BUDGET:



APPROX. \$3.8M

ADMINISTERED GRANTS & PROGRAMS

Grants		Programs	
Grant Name	Granting Agency	Program	Description
EHEAP: (Emergency Home Energy Assistance Program)	Area Agency on Aging	EHEAP: (Emergency Home Energy Assistance Program)	Aids eligible low-income households experiencing a home energy emergency.
OAA (Older Americans Act)	Area Agency on Aging	Cremation/Burial:	Indigent Cremation/Burial Services are county-funded and may be available to assist eligible indigent families with cremation costs.
		HCRA: Health Care Responsibility Act	a state-mandated program which each Florida County is responsible for assisting in the payment of emergency out-of-county care for eligible low-income residents.
		Round Up	Can assist families who are past due on their Pasco County water bill.
		Case Management Sustainability Planning	is offered and provided to the citizens to assess what the main underlying reason for their social assistance need.

DIRECTOR:

BRIAN HOBEN

bhoben@pascocountyfl.net

Phone: 727-457-3180

<https://www.pascocountyfl.net/239>

/Community-Services

UNIQUE STRENGTHS

- Space
- Development
- Growth

UNIQUE CHALLENGES

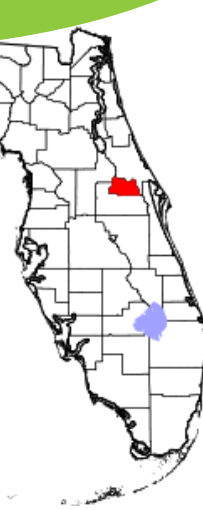
- Affordable Housing
- Homelessness
- Sheltering

Seminole County Community Services

OUR MISSION: "TO EMPOWER SEMINOLE COUNTY INDIVIDUALS, FAMILIES, AND COMMUNITIES TO ACHIEVE STABILITY AND SELF-SUFFICIENCY BY LINKING AND LEVERAGING LOCAL RESOURCES."

MUNICIPALITIES:

- 1- Oveido
- 2- Winter Springs
- 3- Sanford
- 4- Casselberry
- 5- Altamonte Springs
- 6- Longwood
- 7- Lake Mary



Population
470,000



Average
39



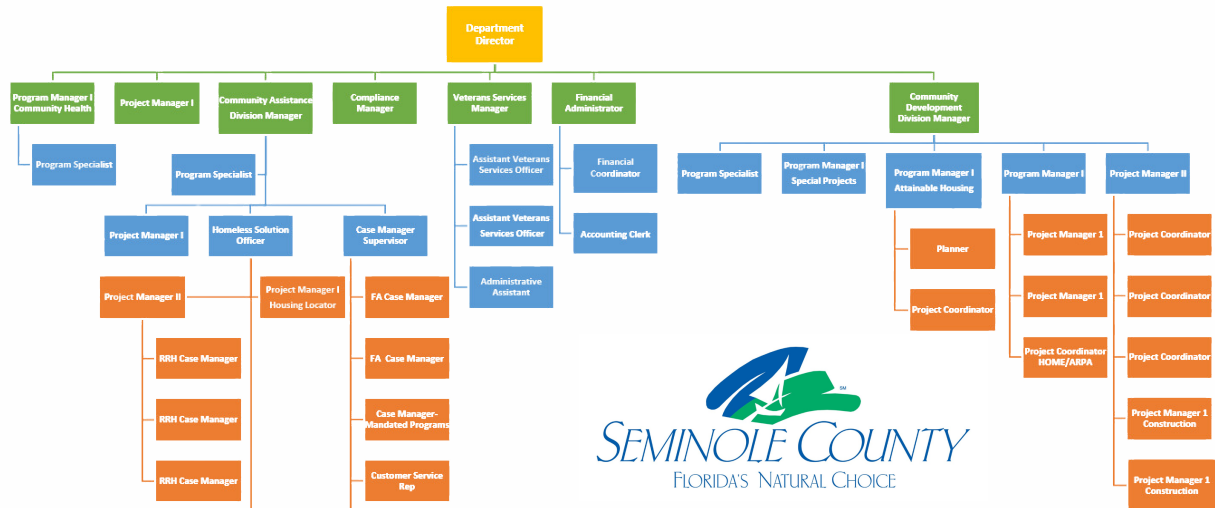
Poverty Rate
9%



Median Income
\$67,470

census.gov

ORGANIZATIONAL CHART



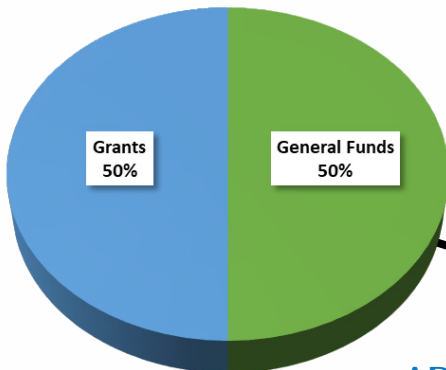
STAFF TOTAL:

45

DIVISIONS:

- 1. Community Assistance
- 2. Community Development
- 3. Veteran Services
- 4. Community Health

BUDGET:



APPROX. \$28M

ADMINISTERED GRANTS

Grants	
Grant Name	Granting Agency
Community Development Block Grant	HUD
HOME Partnerships	HUD
SHIP	Florida Housing Finance Corporation
Neighborhood Stabilization Program	HUD
Community Services Block Grant	Department of Economic Opportunity
Emergency Solutions	HUD
Shelter Plus Care (CoC)	HUD
State Emergency Solutions Grant/Continuum of Care Grant	Lead Agency for Continuum of Care

DIRECTOR:

ALLISON THALL

athall@seminolecountyfl.gov

Phone: 407-665-2301

www.seminolecountyfl.gov

UNIQUE STRENGTHS

- Collaboration of local non-profit resources
- Innovative Approach to Affordable Housing
- Commissioners are receptive of the needs of the non-profits

UNIQUE CHALLENGES

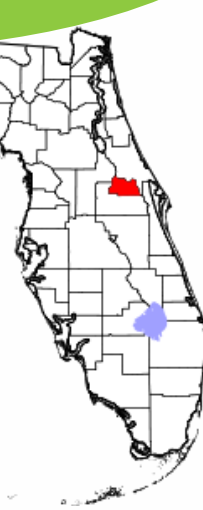
- Lack of Affordable Housing
- Disjointed public transportation system
- Increased need for Mental Health Services

Seminole County Community Services

OUR MISSION: “TO EMPOWER SEMINOLE COUNTY INDIVIDUALS, FAMILIES, AND COMMUNITIES TO ACHIEVE STABILITY AND SELF-SUFFICIENCY BY LINKING AND LEVERAGING LOCAL RESOURCES.”

MUNICIPALITIES:

- 1- Oveido
- 2- Winter Springs
- 3- Sanford
- 4- Casselberry
- 5- Altamonte Springs
- 6- Longwood
- 7- Lake Mary



Population
470,000



Average
39



Poverty Rate
9%



Median Income
\$67,470

census.gov

PROGRAMS

Program	Description
Minor Home Repair:	The Minor Home Repair Program is designed to provide assistance in the form of a grant to eligible low-income homeowners in Seminole County, who would not otherwise be able to make necessary repairs to correct safety concerns and improve the immediate livability of their homes.
Rehab/Reconstruct:	The Homeowner Rehabilitation Program is intended to meet the housing rehabilitation needs of income-eligible households and to preserve affordable housing in Seminole County. In cases where the structure has deteriorated to a point of being unsafe and no longer habitable, and rehabilitation would not bring the dwelling to property standards, the existing home may be demolished, and a new home constructed under this program.
Attainable Housing:	The County has set aside funds for a local housing trust fund to address the affordable housing problem in the County. This can be used to assist with impact fees and other financial incentives for the construction of new affordable rentals and home ownership opportunities.
First Time Homebuyers:	The Purchase Assistance Program provides down payment assistance to income-eligible first-time homebuyers of up to \$55,000 depending on income level and needs to help cover the costs to purchase a newly constructed or existing home in Seminole County.
HCRA/Indigent Care:	Provides uninsured indigent households with financial assistance to cover emergency medical services when admitted to out-of-county hospitals within the State of Florida or Lake Monroe hospital in Seminole County.
Cremation:	Cremation Assistance, financial assistance to cover the cost of cremation is available for indigent individuals who die within Seminole County borders. Assistance may also be provided for those who die and are unclaimed and/or are unknown individuals (burial only).
Prevention/Deposit:	Assistance with rent, mortgage, and/or utilities for households experiencing an unexpected financial hardship. Deposit Assistance is available for households' experiencing homelessness or in imminent danger of becoming homeless.
Dental: Community Service Agency	Dental Assistance program is to provide financial assistance with the cost of cleanings, deep cleanings, extractions, fillings, partial/full dentures, referral costs, x-rays, root canals and crowns.
Partnership Program:	Annually, General Revenue funds are provided as grants to local non-profits for programs and services which the County has determined to be an essential or supportive service.
Rapid Re-Housing:	Provides short-term rental assistance and case management services to families with minor children. The goals are to help people obtain housing quickly, increase self-sufficiency, and housing stability.
Permanent Supportive Housing:	Provides permanent rental subsidy and case management support to those individuals who are chronically homeless.

DIVISIONS:

1. Community Assistance
2. Community Development
3. Veteran Services
4. Community Health



DIRECTOR:

ALLISON THALL

athall@seminolecountyfl.gov
Phone: 407-665-2301
www.seminolecountyfl.gov

Alachua County Community Support Services

OUR MISSION: TO BE A PLACE OF HOPE AND SUPPORT WHERE INDIVIDUALS ARE SEEN, VOICES ARE HEARD, WOUNDS ARE HEALED AND PEOPLE ARE STRENGTHENED.

MUNICIPALITIES:

- 1-City of Alachua
- 2-Archer
- 3-Gainesville
- 4- Hawthorne
- 5-High Springs
- 6-Town of La Crosse
- 7- Town of Micanopy
- 8- Newberry
- 9-Waldo

DIVISIONS:

1. Community Agency Partnership Program
2. Community Stabilization
3. Foster Grandparent Program/Senior Services
4. Housing
5. Social Services
6. Veteran Services



Population
284,030



Average
31.7



Poverty Rate
19.1%



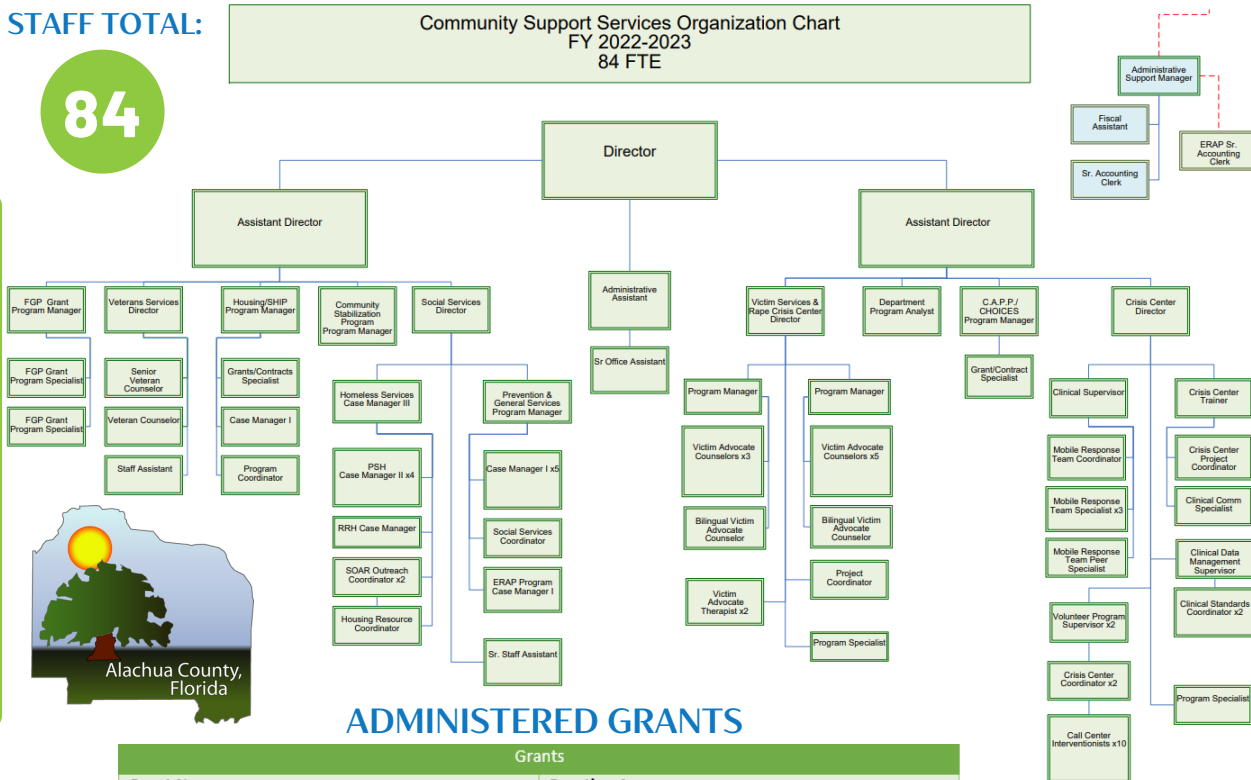
Median Income
\$53,314

census.gov

STAFF TOTAL:

84

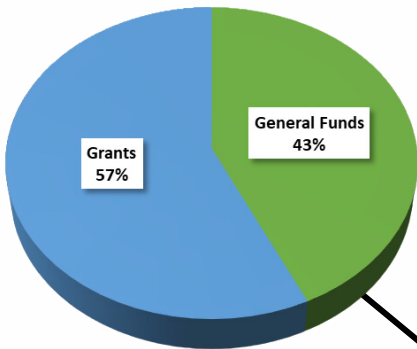
ORGANIZATIONAL CHART



ADMINISTERED GRANTS

Grants	
Grant Name	Granting Agency
ERAP- Emergency Rental Assistance Program	Department of Treasury
988 and mobile Response Teams	Lutheran Services of Florida
Crime Victims	Office of Attorney General, Victims of Crime Act Grant
Sexual Assault Victims - funded through the Trust Fund and General Revenue	Florida Coalition Against Sexual Violence
City of Gainesville General Fund for a Victim Advocate	City of Gainesville General Fund
Community Development Block Grant	Florida Housing Finance Corporation
State Housing Initiative Partnerships	Florida Housing Finance Corporation
AmeriCorps Seniors Foster Grandparents Program	AmeriCorps

BUDGET:



APPROX. \$66M

DIRECTOR:

CLAUDIA TUCK

Phone: 352-264-6706

<https://www.alachuacounty.us>

UNIQUE STRENGTHS

- Crisis Response
- Affordable Housing Funds
- Collaboration between interlocal government and mezzo/ macro systems

UNIQUE CHALLENGES

- Gun Violence among youth
- Transportation
- staffing vacancies

Pinellas County Human Services

OUR MISSION: PINELLAS COUNTY HUMAN SERVICES WORKS WITH OUR PARTNERS TO HELP COUNTY RESIDENTS MEET ESSENTIAL NEEDS AND INCREASE THEIR SELF-SUFFICIENCY THROUGH A RANGE OF COMMUNITY PROGRAMS COVERING HEALTH, HOMELESSNESS, CONSUMER PROTECTION, VETERAN SERVICES, JUSTICE COORDINATION SERVICES, FINANCIAL ASSISTANCE AND MORE.



Population
957,989



Average
48.5



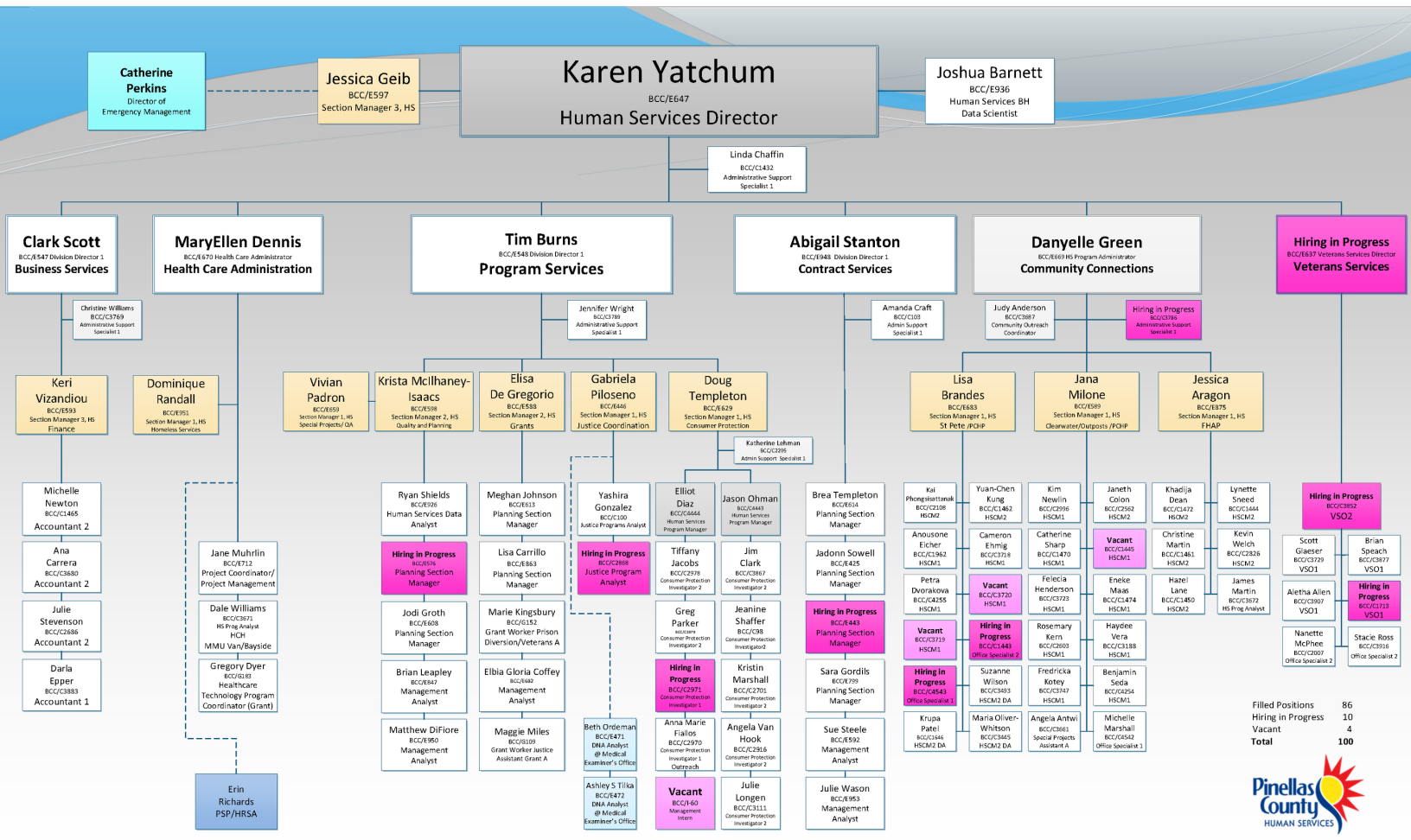
Poverty Rate
12.3%



Median Income
\$60,451

census.gov

ORGANIZATIONAL CHART



STAFF TOTAL:

100



May 12, 2023

Pinellas County Human Services

OUR MISSION: PINELLAS COUNTY HUMAN SERVICES WORKS WITH OUR PARTNERS TO HELP COUNTY RESIDENTS MEET ESSENTIAL NEEDS AND INCREASE THEIR SELF-SUFFICIENCY THROUGH A RANGE OF COMMUNITY PROGRAMS COVERING HEALTH, HOMELESSNESS, CONSUMER PROTECTION, VETERAN SERVICES, JUSTICE COORDINATION SERVICES, FINANCIAL ASSISTANCE AND MORE.

MUNICIPALITIES:

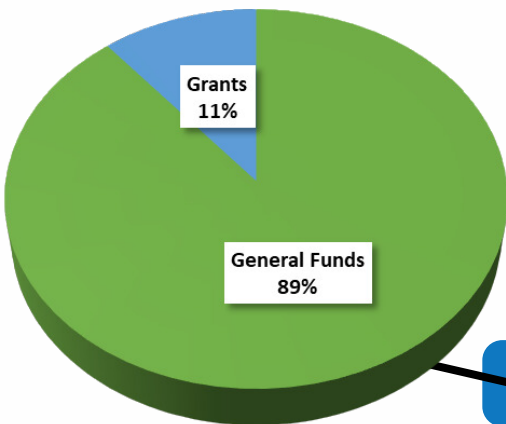
- 1-Plant City
- 2- Temple Terrace
- 3- City of Tampa

DIVISIONS:



1. Administration
2. Business Services
3. Contracts
4. Community Connections
5. Programs
6. Veteran Services
7. Consumer Protection
8. Community Connections/Homeless Prevention & Self Sufficiency
9. Community Impact and Supportive Services
10. Justice Coordination

BUDGET:



APPROX. \$66M

UNIQUE STRENGTHS

- Large network of Human Service Providers
- Pinellas County Health Program/FQHC
- Building a coordinated access model for Behavioral Health Services

UNIQUE CHALLENGES

- Substance related deaths continue to move in wrong direction
- Siloed Care
- Affordable Housing/densely populated areas



Population
957,989



Average
48.5



Poverty Rate
12.3%



Median Income
\$60,451

census.gov

ADMINISTERED GRANTS

Grants	
Grant Name	Granting Agency
Health care for the Homeless	HRSA
American Rescue Plan Act Funding for Health Centers	HRSA
COSSAP-Comprehensive Opioid Stimulant and Substance Abuse Program	SAMHSA
Assisted Outpatient Treatment Grant	SAMHSA
First Responder- CARA	SAMHSA
Justice for Families	DOJ
Aurora Project	DOJ
Justice Assistance Grant	DOJ
STOP School Violence Prevention and Mental Health	DOJ
Veterans Treatment Court	SAMHSA
Adult Drug Court Expansion	SAMHSA
Opioid Affected Youth Initiative	DOJ
FY21 Family Treatment Court Enhancement	SAMHSA
DCF CCRP (Complex Case Reinvest)	State of Florida
The Justice and Mental Health Collaboration Program	SAMHSA
Adult Post-Adjudicatory Diversion Drug Court Expansion	SAMHSA

DIRECTOR:

KAREN KYATCHUM

Kyatchum@pinellas.gov

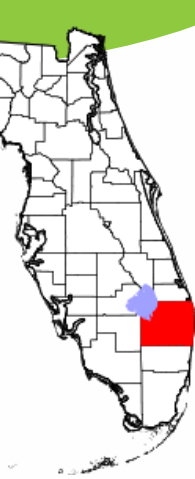
Phone: 727-464-5045

<https://pinellas.gov/department/human-services/>

Palm Beach County Human Services & Community Action

MUNICIPALITIES:

- 1- Boca Raton
- 2- Delray Beach
- 3- Boynton Beach
- 4- Lantana
- 5- Hypoluxo
- 6- Greenacres
- 7- Wellington
- 8- Royal Palm Beach
- 9- Lake Worth Beach
- 10- Palm Springs
- 11- Lake Clarke Shores
- 12- West Palm Beach
- 13- West Gate
- 14- Riviera Beach
- 15- Jupiter
- 16- Juno
- 17- Jupiter Farms
- 18- Loxahatchee
- 19- West Lake
- 20- North Palm Beach
- 21- Tequesta
- 22- Belle Glade
- 23- South Bay
- 24- Briny Breezes
- 25- Sewell Point
- 26- Palm Beach
- 27- South Palm Beach
- 28- Manalapan
- 29- Pahokee
- 30- Haverhill
- 31- Lake Worth
- 32- Canal Point
- 33- Mangonia Park



OUR MISSION: TO PROVIDE, SERVE, AND EDUCATE ELIGIBLE RESIDENTS OF PALM BEACH COUNTY THROUGH CASE MANAGEMENT, SOCIAL SERVICES, ADVOCACY AND COMMUNITY LINKAGE THEREBY EMPOWERING THE INDIVIDUAL/FAMILY TO IMPROVE THEIR QUALITY OF LIFE.



Population
1,498,000



Average
45



Poverty Rate
12%

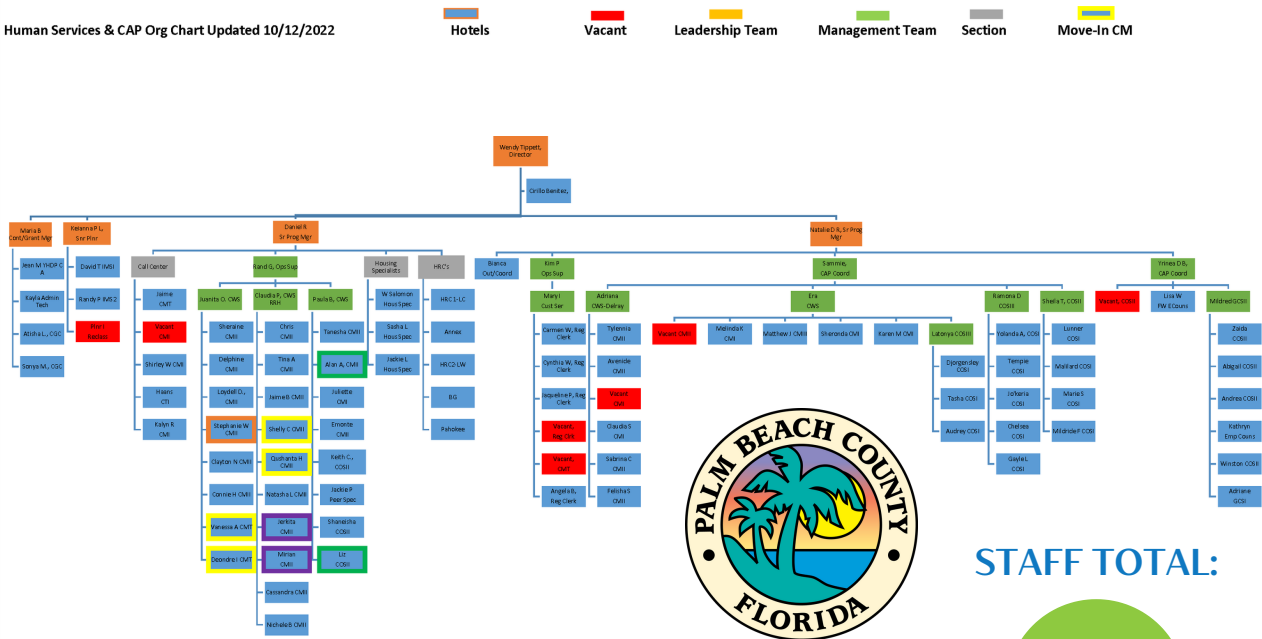


Median Income
\$90,300

census.gov

ORGANIZATIONAL CHART

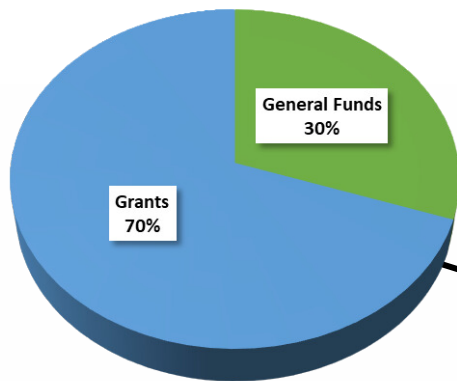
Human Services & CAP Org Chart Updated 10/12/2022



STAFF TOTAL:

125

BUDGET:



APPROX. \$107M

DIVISIONS:

1. Emergency
2. Self-sufficiency
3. Intervention
4. Homeless Services

DIRECTOR:

WENDY TIPPETT

wtippett@pbc.org
Phone: 561-355-4772
discover.pbcgov.org

UNIQUE STRENGTHS

- Collaborations Housing Authorities have engaged in collaborations with the HS world government, nonprofits and faith based entities at the same table.

UNIQUE CHALLENGES

- Safe, decent and affordable housing for 50% AMI and below lack of behavioral health care gentrification.

Palm Beach County Human Services & Community Action

OUR MISSION: TO PROVIDE, SERVE, AND EDUCATE ELIGIBLE RESIDENTS OF PALM BEACH COUNTY THROUGH CASE MANAGEMENT, SOCIAL SERVICES, ADVOCACY AND COMMUNITY LINKAGE THEREBY EMPOWERING THE INDIVIDUAL/FAMILY TO IMPROVE THEIR QUALITY OF LIFE.

MUNICIPALITIES:

- 1- Boca Raton
- 2- Delray Beach
- 3- Boynton Beach
- 4- Lantana
- 5- Hypoluxo
- 6- Greenacres
- 7- Wellington
- 8- Royal Palm Beach
- 9- Lake Worth Beach
- 10- Palm Springs
- 11- Lake Clarke Shores
- 12- West Palm Beach
- 13- West Gate
- 14- Riviera Beach
- 15- Jupiter
- 16- Juno
- 17- Jupiter Farms
- 18- Loxahatchee
- 19- West Lake
- 20- North Palm Beach
- 21- Tequesta
- 22- Belle Glade
- 23- South Bay
- 24- Briny Breezes
- 25- Sewell Point
- 26- Palm Beach
- 27- South Palm Beach
- 28- Manalapan
- 29- Pahokee
- 30- Haverhill
- 31- Lake Worth
- 32- Canal Point
- 33- Mangonia Park



Population
1,498,000



Average
45



Poverty Rate
12%



Median Income
\$90,300

census.gov

PROGRAMS

Program:	Description: (2-3 Sentences)
Homeless Outreach	4 teams, including a physician and a mental health clinician, work collaboratively with three other agencies to provide outreach to the homeless throughout Palm Beach County.
Coordinated Entry	Operate a 24/7 Homeless and Homeless Prevention Hotline that provides navigation, diversion, and assessment to the homeless residents in PBC. The Hotline also operates as a line that citizen of PBC residents can call and report a homeless encampment or person.
Rapid Re-Housing program	Provides 200 units of Rapid Re-Housing and comprehensive case management to homeless individuals and families.
Parks2Work	Provide work in county parks to long term chronic homeless who may need assistance transition back into the work environment.
Homeless Information Management System	Manage and oversee the HMIS system for the PBC Continuum of Care.
Homeless Prevention including rental and utility assistance.	Provide resources to families and individuals who are risk of homelessness including rental assistance, relocation resources and utility assistance.
Employment Training	Provide job training for persons who are enrolled in Community Action and in need of specific training such as truck drivers, IT, etc.
Indigent Cremation SMART	Provide assistance to families and individuals who are in need of assistance to properly cremate their loved one.
landlord program	Designed to encourage landlords to engage with the rapid rehousing program and assist the homeless with rentals that are safe, affordable, and decent.

DIVISIONS:

1. Emergency
2. Self-sufficiency
3. Intervention
4. Homeless Services

DIRECTOR:

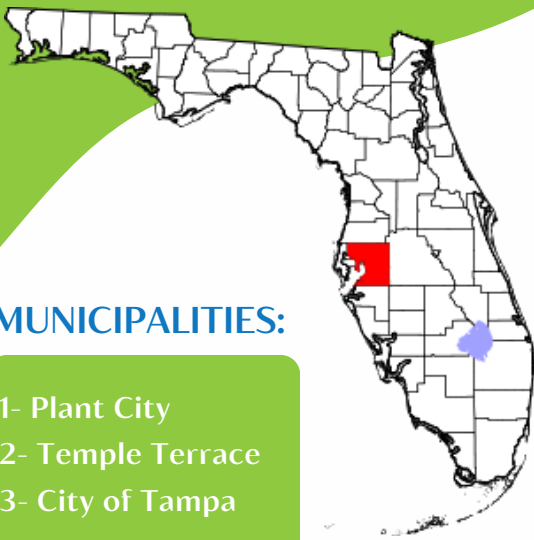
WENDY TIPPETT

wtipsett@pbc.org
Phone: 561-355-4772
discover.pbcgov.org

ADMINISTERED GRANTS

Grants	
Grant Name	Granting Agency
TANF, Challenge and Staffing Grant	State of Florida Office on Homelessness
Emergency Solutions Grant (ESG)	HUD
Continuum of Care funding	HUD
Emergency Food and Shelter Program	FEMA
Ad Valorem Funding	Palm Beach County
Community Development Block Grant	HUD
Community Services Block Grant	DEO State of Florida
Care to Share	Florida Power and Light
Low Income Household Water Assistance Program - LIHEAP	DEO State of Florida
Low Income Home Energy Assistance Program- LIHWAP	DEO State of Florida





Hillsborough County Human Services

OUR MISSION: TO IMPROVE THE QUALITY OF LIFE OF HILLSBOROUGH COUNTY'S MOST VULNERABLE CITIZENS BY PROMOTING SELF-SUFFICIENCY THROUGH INTERACTIVE SERVICE DELIVERY AND STRATEGIC PARTNERSHIPS.

MUNICIPALITIES:

- 1- Plant City
- 2- Temple Terrace
- 3- City of Tampa



Population
1,513,301



Average
37.9



Poverty Rate
14.3%



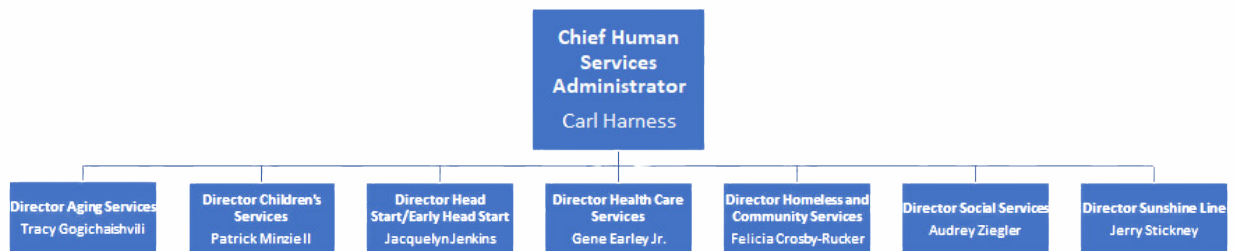
Median Income
\$64,164

census.gov

DIVISIONS:

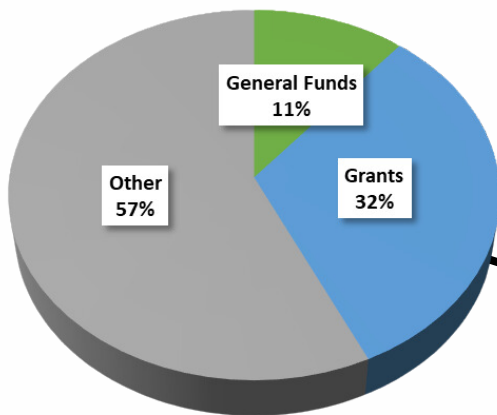
- 1- Aging Services
- 2- Children's Services
- 3- Head Start
- 4- Health Care Services
- 5- Homeless & Community Services
- 6- Social Services
- 7- Sunshine Line

ORGANIZATIONAL CHART



Hillsborough County Florida

BUDGET:



APPROX. \$370M

STAFF TOTAL:

798

DIRECTOR:

CARL HARNESS

harnessc@hillsboroughcounty.org

Phone: 831-272-1153

www.hillsboroughcounty.org

UNIQUE STRENGTHS

- Diversified economic base that includes large professional and management services, health services and financial services.
- Low unemployment rate (2.6%)
- Robust tourist economy
- Strong network of partner agencies, nonprofit and volunteer organizations

UNIQUE CHALLENGES

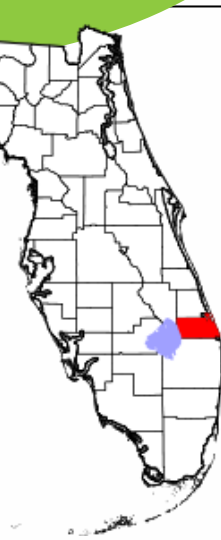
- a. Affordable Housing
- b. Transportation
- c. Low wages and job opportunities

Martin County Human Services

MUNICIPALITIES:

- 1- City of Stuart
- 2- Village of Indiantown
- 3- Town of Sewall's Point
- 4- Town of Jupiter Island
- 5- Town of Ocean Breeze

OUR MISSION: TO ENHANCE THE QUALITY OF LIFE OF MARTIN COUNTY RESIDENTS BY PROVIDING INFORMATION, REFERRALS, RESOURCES AND SERVICES, THROUGH COLLABORATION WITH COMMUNITY PARTNERS WITH THE GOAL OF SUPPORTING SUSTAINABILITY.



Population
161,000



Average
53



Poverty Rate
11.4%

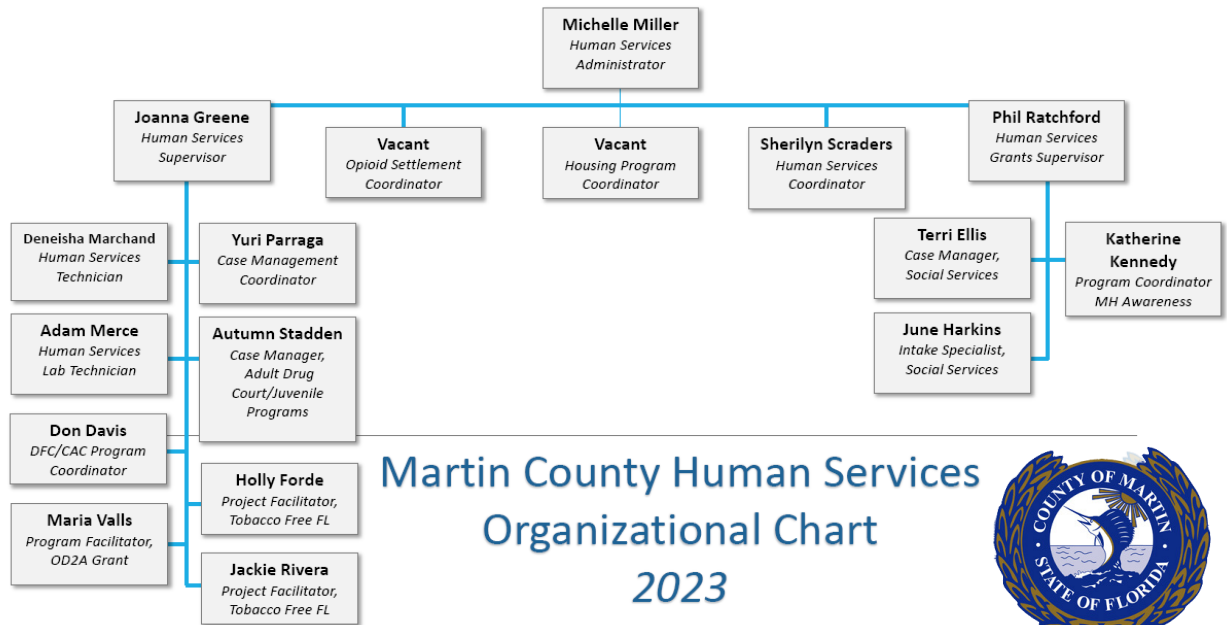


Median Income
\$69,769

census.gov

DIVISIONS:

1. Community Services/ Medical Services
2. Veteran Services
3. Social Services
4. Substance abuse treatment assistance
5. Housing



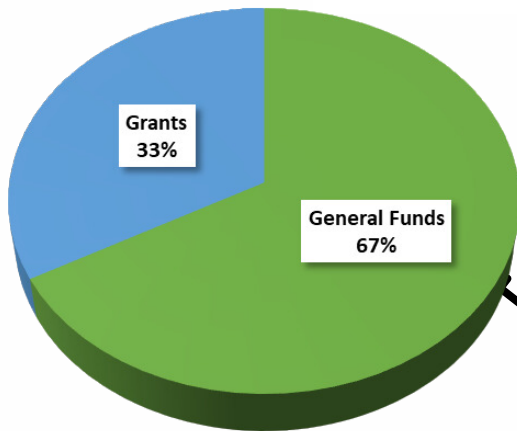
Martin County Human Services Organizational Chart 2023



STAFF TOTAL:

19

BUDGET:



APPROX. \$7M

DIRECTOR:

MICHELLE MILLER

mmiller@martin.fl.us
Phone: 772-288-5735
www.martin.fl.us

UNIQUE STRENGTHS

- Strong efforts to preserve quality of life in the county
- High community engagement/ involvement
- Commission prioritizes maintaining natural environment (wetland areas, preserves, water quality)

UNIQUE CHALLENGES

- Affordable housing
- Pockets of micro-communities with little interaction with each other
- Limited resources available because county is considered small

Martin County Human Services

MUNICIPALITIES:

- 1- City of Stuart
- 2- Village of Indiantown
- 3- Town of Sewall's Point
- 4- Town of Jupiter Island
- 5- Town of Ocean Breeze

OUR MISSION: TO ENHANCE THE QUALITY OF LIFE OF MARTIN COUNTY RESIDENTS BY PROVIDING INFORMATION, REFERRALS, RESOURCES AND SERVICES, THROUGH COLLABORATION WITH COMMUNITY PARTNERS WITH THE GOAL OF SUPPORTING SUSTAINABILITY.



Population
161,000



Average
53



Poverty Rate
11.4%



Median Income
\$69,769

census.gov

DIVISIONS:

1. Community Services/ Medical Services
2. Veteran Services
3. Social Services
4. Substance abuse treatment assistance
5. Housing



PROGRAMS

Program:	Description: (2-3 Sentences)
1) Rental/Utility Assistance 2) Permanent Supportive Housing 3) Homeowner Down Payment/Construction Rehabilitation	1) Assist qualified residents with past due rent and/or utility bills. 2) Assist qualified, chronically homeless residents with subsidized rental assistance. 3) Assist qualified residents with down payment assistance on a home and/or necessary home rehabilitation to improve housing quality standards within the home.
4) Martin County Community Action Coalition (MC CAC) 5) Tobacco Free Florida 6) Overdose Data To Action (OD2A)	4) Provide youth alcohol and marijuana prevention education through community outreach programming. 5) Advocate for tobacco policy change and use cessation through local collaboration and community outreach programming. 6) Provide opioid use/misuse and overdose prevention education through community outreach programming and case management services.
7) Mental Health Awareness Trainings 8) Mental Health Court 9) Drug Testing Services	7) Provide mental health awareness trainings to community organizations to reduce the stigma of mental health. 8) Provide case management services and financial assistance (treatment, transitional housing, medication, transportation, etc.) for individuals in Mental Health Court. 9) Provide drug testing services through an on-site laboratory for program clients, community organization referrals, and the public.
10) Adult Drug Court 11) Juvenile Diversion Programs	10) Provide case management services and financial assistance (treatment, transitional housing, medication, transportation, etc.) for individuals in Adult Drug Court. 11) Provide case management services and financial assistance when available (treatment, transitional housing, medication, transportation, etc.) for individuals in Juvenile Diversion Programs: Civil Citation, Delinquency Diversion, & REACH (school disciplinary program).
12) Indigent Services 13) Prescription Assistance	12) Provide cremation services for qualified families of indigent individuals who pass away in Martin County. Provide assistance with expenses incurred during an emergency hospitalization for qualified indigent individuals. 13) Provide assistance with prescription expenses for qualified residents.

ADMINISTERED GRANTS

Grant:	Granting Agency:
Community Services Block Grant (CSBG)	Florida Dept. of Economic Opportunity (FL DEO)
Permanent Supportive Housing Grant	US Dept. of Housing and Urban Development (HUD)
Drug-Free Communities Grant	US Centers for Disease Control and Prevention (CDC)
Tobacco Free Florida	Tobacco Free Florida (TFF)
Justice Assistance Grant - Countywide	FL Dept. of Law Enforcement (FDLE)
Adult Drug Court Discretionary Grant	Bureau of Justice Assistance (BJA)
Criminal Justice, Mental Health, and Substance Abuse Reinvestment Grant	FL Dept. of Children and Families (FL DCF)
Mental Health Awareness Training Grant	Substance Abuse Mental Health Services Administration (SAMHSA)
Overdose Data to Action Grant (OD2A)	US Centers for Disease Control and Prevention (CDC) - through FL Dept. of Health (DOH)
State Housing Initiative Partnership (SHIP)	Florida Housing Finance Corporation
Community Development Block Grant (CDBG)	US Dept. of Housing and Urban Development (HUD)

DIRECTOR:

MICHELLE MILLER

mmiller@martin.fl.us
Phone: 772-288-5735
www.martin.fl.us

Duval County Social Services Division



MUNICIPALITIES:

1- Jacksonville

OUR MISSION: THE SOCIAL SERVICES DIVISION OFFERS PROGRAMS AND SERVICES THAT HELP PEOPLE ENJOY A BETTER QUALITY OF LIFE IN THE COMMUNITY, PARTICULARLY THOSE WITH SPECIAL NEEDS. OUR SERVICES ARE DESIGNED FOR PEOPLE WITH SUBSTANCE ABUSE AND MENTAL HEALTH ISSUES, AIDS AND HIV, VICTIMS OF CRIME, AND INDIVIDUALS IN NEED OF EMERGENCY FINANCIAL ASSISTANCE.



Population
999,935



Average
35.9



Poverty Rate
10.7%

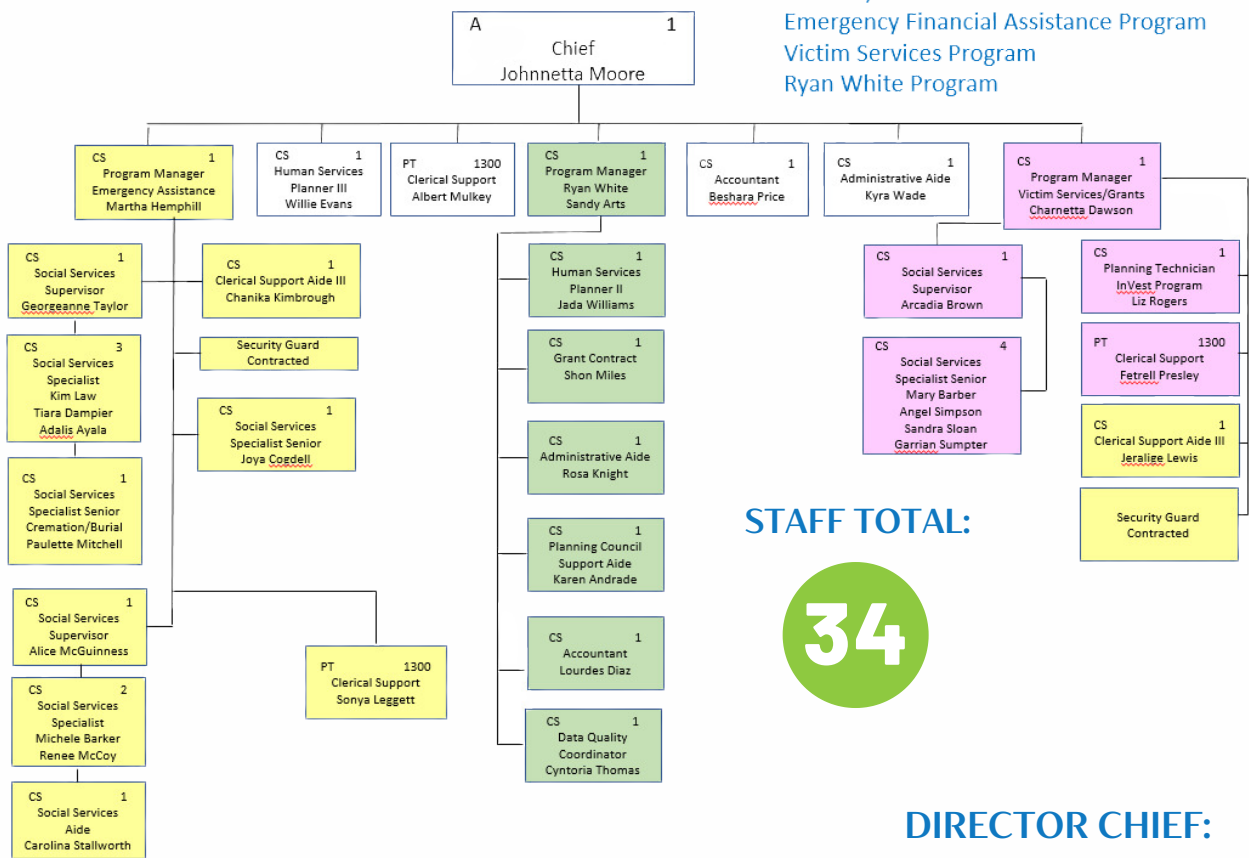


Median Income
\$59,541

census.gov

ORGANIZATIONAL CHART

Social Services Division
FY 2021/2022
Emergency Financial Assistance Program
Victim Services Program
Ryan White Program



STAFF TOTAL:

34



UNIQUE STRENGTHS

- Jacksonville is a strong, civic minded community that values partnerships and collaborations to create impact.
- "Quality of Life" issues that can effect the community and take a proactive stance towards issues.
- Jacksonville boasts the largest urban park system in the nation, 80,000 acres of parks, including 7 state parks, 2 National Parks, a National Preserve and 400 City Parks.

UNIQUE CHALLENGES

- Affordable housing for those who are homeless and/or at below the poverty level.
- Comprehensive strategies to strengthen the continuum of care which include innovative ideas like a Family Justice Program and one stop services for those seeking assistance.
- Education , Transportation and Health Care especially Mental Health

DIRECTOR CHIEF:

JOHNNETTA MOORE

jmoore@coj.net

Phone: 904-255-3322

www.coj.net

Duval County Social Services Division

OUR MISSION: THE SOCIAL SERVICES DIVISION OFFERS PROGRAMS AND SERVICES THAT HELP PEOPLE ENJOY A BETTER QUALITY OF LIFE IN THE COMMUNITY, PARTICULARLY THOSE WITH SPECIAL NEEDS. OUR SERVICES ARE DESIGNED FOR PEOPLE WITH SUBSTANCE ABUSE AND MENTAL HEALTH ISSUES, AIDS AND HIV, VICTIMS OF CRIME, AND INDIVIDUALS IN NEED OF EMERGENCY FINANCIAL ASSISTANCE.

MUNICIPALITIES:

1- Jacksonville

DIVISIONS:

1- Social Services Division



Population
999,935



Average
35.9



Poverty Rate
10.7%



Median Income
\$59,541

census.gov

PROGRAMS

Program:	Description: (2-3 Sentences)
Emergency Financial Assistance Program	Provides emergency financial rent and/or utility assistance to eligible Duval County residents to help prevent homelessness and to help transition from homelessness to a stable living arrangement. Serves as the City's responder for providing financial resources to displaced families due to fires and code enforcement/DART condemnations.
Housing and Supportive Services for the Homeless	Funding of an emergency shelter that provides housing, and supportive services to the city's homeless population with an array of services for those in need.
Indigent Burial Program	*Provides, as required by Florida Statute, cremation, and burial services for indigent Duval County residents.
Ryan White Program	Except for veterans and unidentified decedents, proper disposal of the dead is limited to cremations only; veterans are buried at the National Cemetery while unidentified decedents are buried at the city owned Hillside Cemetery. *This grant enables the division to ensure that low-income people in the Jacksonville Transitional Grant Area (TGA) receive the care and support services they need to fight HIV / AIDS.
Victim Services Program	Provides comprehensive case management, referral and victim advocacy services to victims of crimes and their significant others; works in sync with the Jacksonville Sheriff's Office and other crime prevention/victim advocacy programs. Engages the community in crime prevention education; maintains a mobile unit to deliver outreach services to the elderly and disabled. Houses the Intimate Violence Enhanced Services Team (INVEST) which brings together a city planning technician, Hubbard House advocates and specially trained and assigned Jacksonville Sheriff officers to identify and intervene in potentially lethal domestic violence cases. INVEST is made possible through a federal Justice Assistance Grant (JAG). Works closely with the Mayor's Victims' Assistance Advisory Council (VAAC) to ensure close collaboration with community agencies and service providers, as well as to improve the rights of crime victims.
Mental Health Services	In partnership with Circuit 4, Department of Children and Families (DCF), Substance Abuse and Mental Health (SAMH) programs, the division provides matching dollars to support comprehensive mental health services and substance abuse services including emergency evaluation (Baker Act), outpatient services and crisis stabilization for adults. The Division also provides funding to help ensure the mentally ill have access to mental health services, supportive housing and aftercare services.
Substance Abuse Services In-Jail Treatment Program	The Division funds in-patient/out-patient, intervention and treatment services for eligible county residents combating substance abuse. In coordination with the Criminal Justice Substance Abuse Program, the division funds services for chemically dependent adults within the Duval County correctional system. Services are comprehensive and include inmates' access to: <ul style="list-style-type: none"> .Licensed substance abuse prevention and intervention services to the general adult inmate population .A specialized four-month, 135 bed intensive substance abuse treatment unit for chemically dependent male and female inmates within the Community Transition Center of the Jacksonville Sheriff's Office .Community-based continuing care (aftercare) services, including case management and other supportive services for up to one year following release from the intensive treatment unit



DIRECTOR CHIEF:

JOHNETTA MOORE

jmoore@coj.net

Phone: 904-255-3322

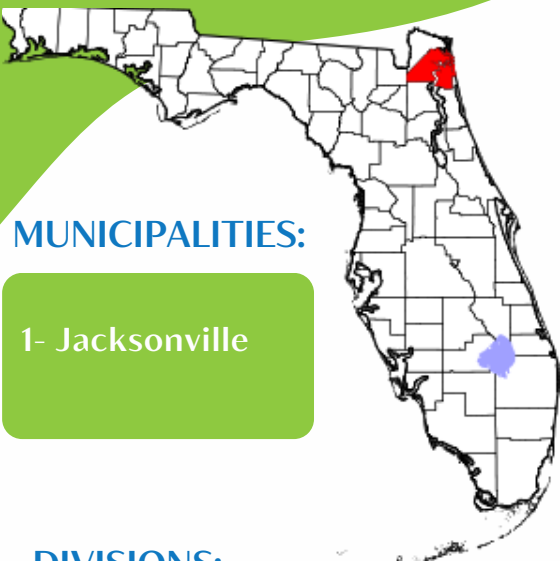
www.coj.net

Duval County Social Services Division

OUR MISSION: THE SOCIAL SERVICES DIVISION OFFERS PROGRAMS AND SERVICES THAT HELP PEOPLE ENJOY A BETTER QUALITY OF LIFE IN THE COMMUNITY, PARTICULARLY THOSE WITH SPECIAL NEEDS. OUR SERVICES ARE DESIGNED FOR PEOPLE WITH SUBSTANCE ABUSE AND MENTAL HEALTH ISSUES, AIDS AND HIV, VICTIMS OF CRIME, AND INDIVIDUALS IN NEED OF EMERGENCY FINANCIAL ASSISTANCE.

MUNICIPALITIES:

1- Jacksonville



Population
999,935



Average
35.9



Poverty Rate
10.7%



Median Income
\$59,541

[census.gov](https://www.census.gov)

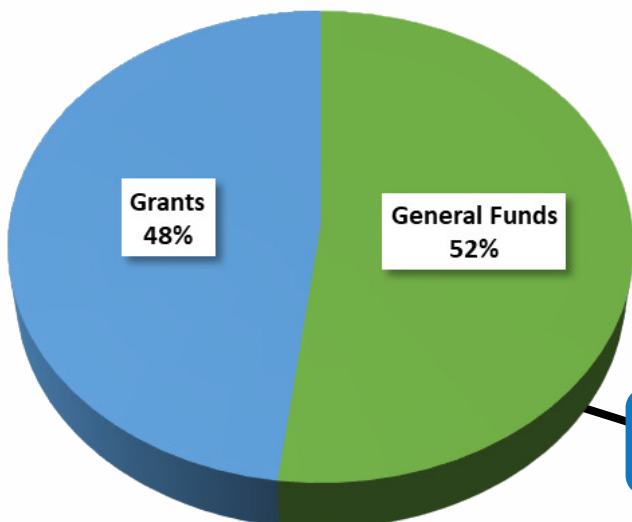
DIVISIONS:

1- Social Services Division

ADMINISTERED GRANTS

Grant:	Granting Agency:
Training and Services to End Violence Against Women with Disabilities	Department of Justice's Office on Violence Against Women (OVW)
Justice for Families Grant	Department of Justice's Office on Violence Against Women (OVW)
Transitional Housing Assistance Grant	Department of Justice's Office on Violence Against Women (OVW)
Enhancing Access to Victim Services Grant	Department of Justice's Office of Victims of Crime (OVC)

BUDGET:



APPROX. \$21.5M

DIRECTOR CHIEF:

JOHNETTA MOORE

jmoore@coj.net
Phone: 904-255-3322
www.coj.net

Osceola County Housing and Community Services

OUR MISSION: TO BUILD A BETTER COMMUNITY BY ENCOURAGING CIVIC ENGAGEMENT, PROVIDING EXCELLENT CUSTOMER SERVICE, AND CREATING ECONOMIC EMPOWERMENT THAT LEADS TO SUSTAINABLE COMMUNITIES.

MUNICIPALITIES:

- 1- City of Kissimmee
- 2- City of St. Cloud



Population
424,946



Average
37



Poverty Rate
13.3%



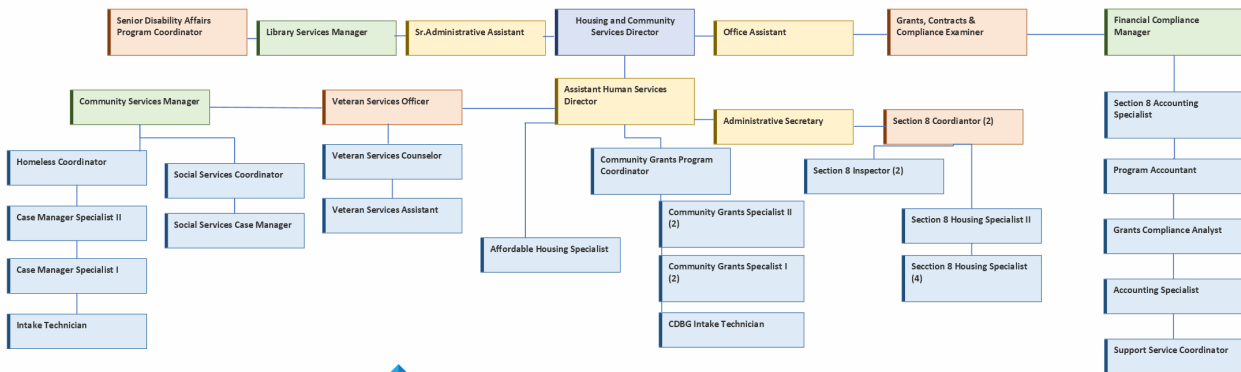
Median Income
\$58,513

census.gov

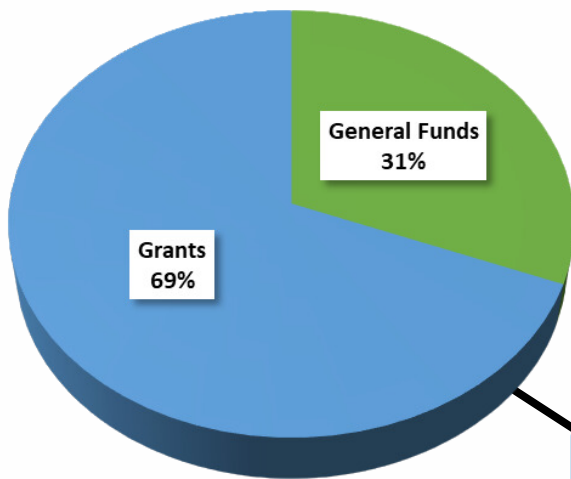
DIVISIONS:

- 1- Section 8
- 2- Community Grants
- 3- Grants & Compliance
- 4- Housing & Community Services
- 5- Veteran Services

ORGANIZATIONAL CHART



BUDGET:



STAFF TOTAL:

41

DIRECTOR:

CELESTIA MCCLLOUD

Celestia.Mccloud@osceola.org

Phone: 407-742-8416

www.osceola.org

UNIQUE STRENGTHS

- Growth & diversity
- Responsive leadership
- Community partnerships

UNIQUE CHALLENGES

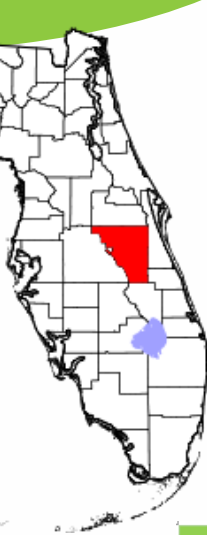
- Affordable and workforce housing
- Homelessness
- Access to care

Osceola County Housing and Community Services

OUR MISSION: TO BUILD A BETTER COMMUNITY BY ENCOURAGING CIVIC ENGAGEMENT, PROVIDING EXCELLENT CUSTOMER SERVICE, AND CREATING ECONOMIC EMPOWERMENT THAT LEADS TO SUSTAINABLE COMMUNITIES.

MUNICIPALITIES:

- 1- City of Kissimmee
- 2- City of St. Cloud



Population
424,946



Average
37



Poverty Rate
13.3%



Median Income
\$58,513

census.gov

DIVISIONS:

- 1- Section 8
- 2- Community Grants
- 3- Grants & Compliance
- 4- Housing & Community Services
- 5- Veteran Services



Program:	Description:
Section 8	Provides assistance for low-income families obtain affordable housing through the Housing Assistance Payment Program (HAP). Program participants pays no more than 30% of their monthly adjusted income towards rent and utilities.
Owner-Occupied Housing Rehabilitation	Program assist income eligible homeowners with necessary repairs to improve safety and quality of life, by assisting with preserving the structural integrity of the home.
Eviction Prevention/Rental Program	Rental assistance and/or rental utility deposit assistance for income qualified families will be provided to residents in jeopardy of being evicted and/or to rehousing residents who are homeless.
HOME Investment Partnership Program	Multiple components of services are available through HOME funding, including Rehabilitation, Purchase Assistance, New Construction-Multi Family and Tenant Based Rental Assistance to name a few. Osceola County has prioritized rental development to increase access and availability of affordable rental units.
Eyeglass Prescription Certificate Program	Program assist low-income uninsured seniors 55 years of age or older to purchase a pair of prescription eyeglasses and eye exam (if needed) once every two (2) years.

Grant:	Granting Agency:	Division:
CDBG HOME	US Dept of Housing and Urban Development	Community Grants
SHIP	Florida Housing Finance Corporation	Community Grants
ESG TANF	Homeless Services Network	Housing and Community Services
Shelter Plus Care	US Dept of Housing and Urban Development	Housing and Community Services

DIRECTOR:

CELESTIA MCCLLOUD

Celestia.Mccloud@osceola.org

Phone: 407-742-8416

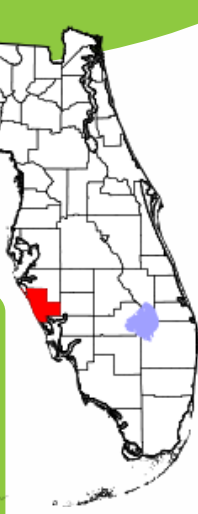
www.osceola.org

Sarasota County Health and Human Services

OUR MISSION: TO FACILITATE PARTNERSHIPS, SET PRIORITIES, LEVERAGE COMMUNITY RESOURCES, ESTABLISH COORDINATING STRUCTURES, AND SECURE FUNDING SOURCES TO CREATE INTEGRATED HUMAN SERVICES DELIVERY SYSTEMS THAT MEET THE NEEDS OF OUR CITIZENS.

MUNICIPALITIES:

- 1- City of Venice
- 2- City of North Port
- 3- City of Sarasota
- 4- Englewood
- 5- Laurel
- 6- Nokomis
- 7- Osprey
- 8- Longboat Key



Population
452,373



Average
57



Poverty Rate
8.6%



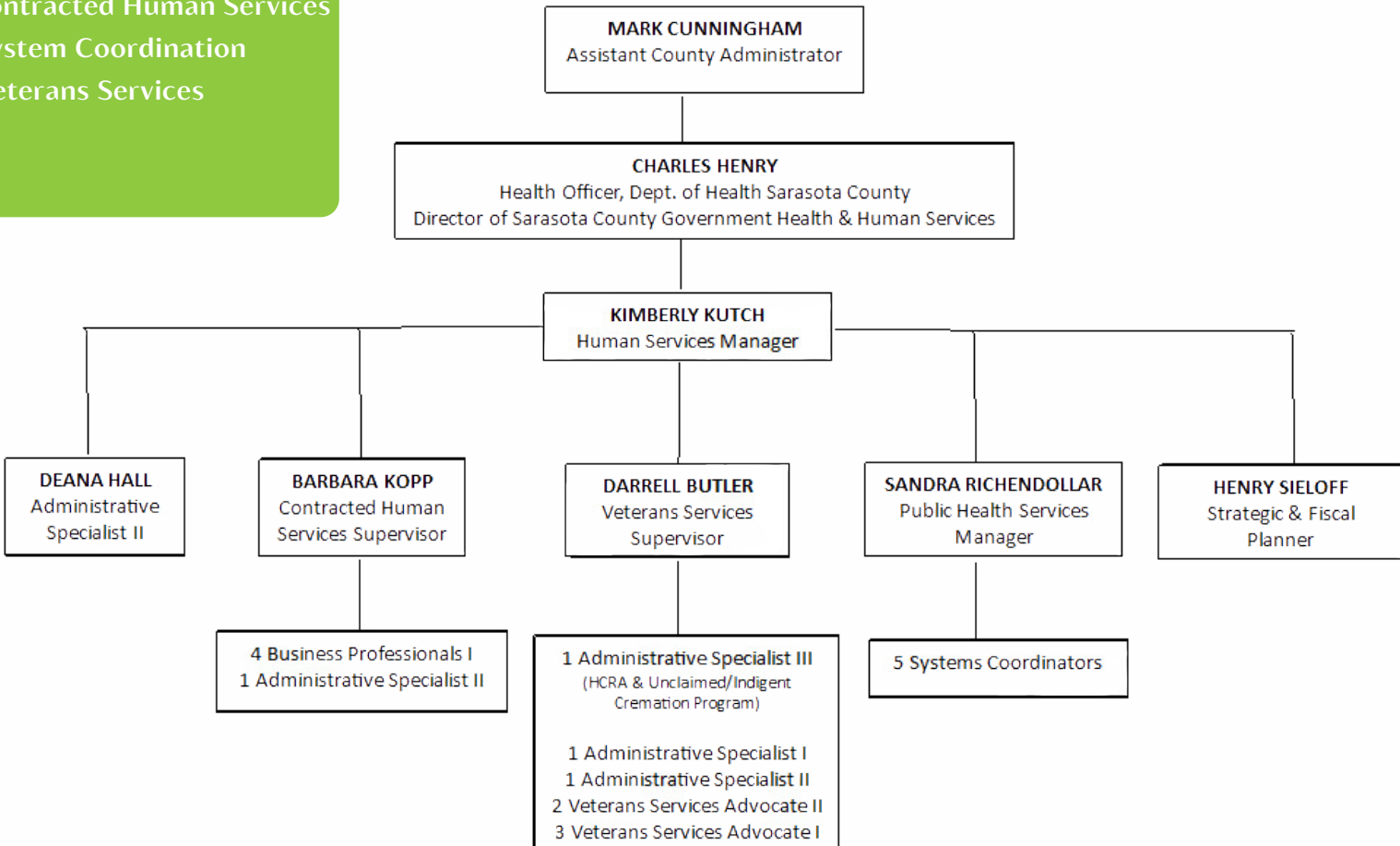
Median Income
\$71,761

census.gov

DIVISIONS:

- 1-Contracted Human Services
- 2-System Coordination
- 3-Veterans Services

ORGANIZATIONAL CHART



DIRECTOR:

KIMBERLY HUTCH

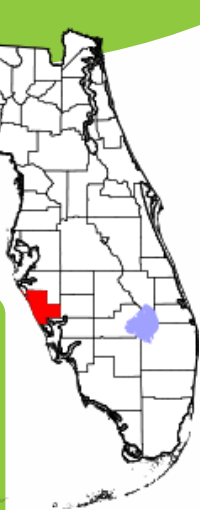
kkutch@scgov.net
Phone: 941-861-5277
SCGov.net



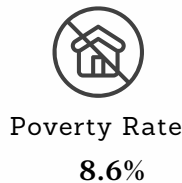
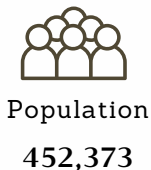
Sarasota County Health and Human Services

MUNICIPALITIES:

- 1- City of Venice
- 2- City of North Port
- 3- City of Sarasota
- 4- Englewood
- 5- Laurel
- 6- Nokomis
- 7- Osprey
- 8- Longboat Key



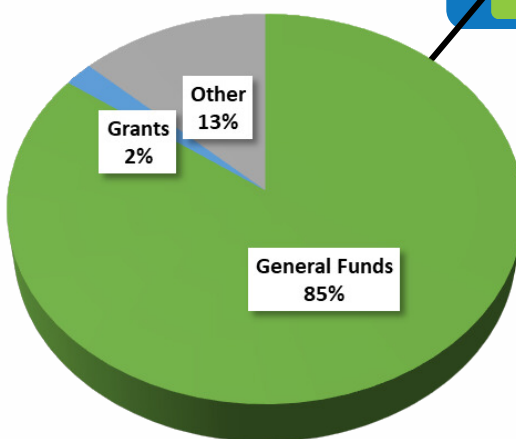
OUR MISSION: TO FACILITATE PARTNERSHIPS, SET PRIORITIES, LEVERAGE COMMUNITY RESOURCES, ESTABLISH COORDINATING STRUCTURES, AND SECURE FUNDING SOURCES TO CREATE INTEGRATED HUMAN SERVICES DELIVERY SYSTEMS THAT MEET THE NEEDS OF OUR CITIZENS.



DIVISIONS:

- 1-Contracted Human Services
- 2-System Coordination
- 3-Veterans Services

BUDGET:



APPROX. \$23M

DIRECTOR:

KIMBERLY HUTCH

kkutch@scgov.net
Phone: 941-861-5277
SCGov.net

UNIQUE STRENGTHS

- Sarasota County is the only county in the state with a combined Health and Human Services department that delivers both county-funded human services and Florida Department of Health (DOH) public health services.
- The Community Foundation of Sarasota County launched in 2012 The Giving Partner, which allows the community to understand how local nonprofits are making a difference in the community. The Giving Partner is a centralized non-profit directory that covers Manatee, Sarasota, Charlotte, and Desoto Counties with comprehensive information that includes but is not limited to each organization, their results, impact, leadership, and financial health.
- A Mental Health Dependent Special District that was created in June 2021 by the Sarasota County Board of County Commissioners (BCC) to address the increasing demand for behavioral health services. As a way to inform the Mental Health Dependent Special District a Mental Health Needs Assessment Taskforce was appointed and began their work on June 30, 2021. Their work consisted of data and document analysis, surveys of both providers and consumers and identifying priorities and needs to improve the behavioral health system of care in Sarasota County. As a result, the BCC adopted a resolution on March 29, 2022, that created a Behavioral Health Advisory Council that serves as an advisory council to the BCC and the governing body of the Mental Health Dependent Special District.

UNIQUE CHALLENGES

- Removal rates per 100 alleged victims of child abuse for investigations closed in Circuit 12 (Sarasota, Manatee, and Desoto Counties) continue to remain greater than statewide average and one of the highest in the state
- Sarasota County is one of the counties in the state with the highest Fentanyl deaths per 100,000 population
- Sarasota County stretches along the southwest coast of Florida that encompasses both urban and rural areas, with 37.4% of the population 65 and older.

Leon County Office of Human Services and Community Partnerships

OUR MISSION: TO BUILD A STRONGER, HEALTHIER COMMUNITY BY PROVIDING A SAFETY NET TO RESOURCES, SERVICES, AND SOLUTIONS FOR CITIZENS IN NEED IN PARTNERSHIP WITH OUR COMMUNITY.



Population
295,921



Average
31



Poverty Rate
16%



Median Income
\$75,900
census.gov

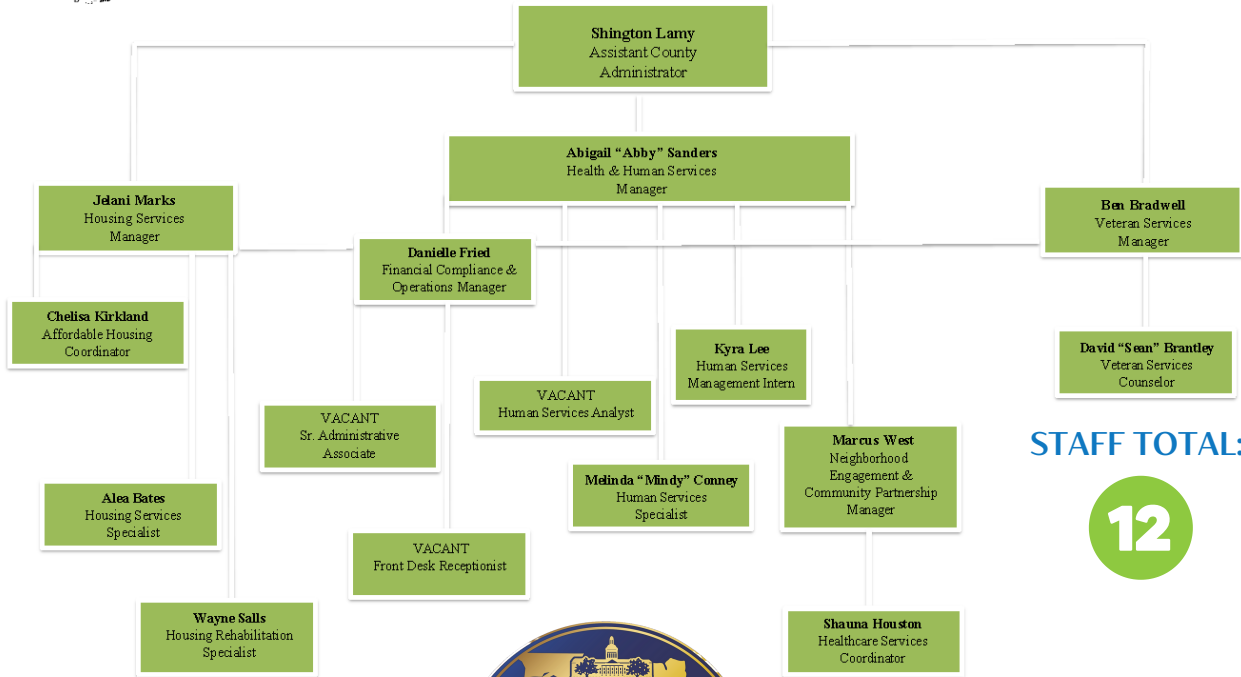
MUNICIPALITIES:

1- Tallahassee

DIVISIONS:

- 1- Primary healthcare services
- 2- Human Services
- 3- Housing Services
- 4- Veteran Services

ORGANIZATIONAL CHART

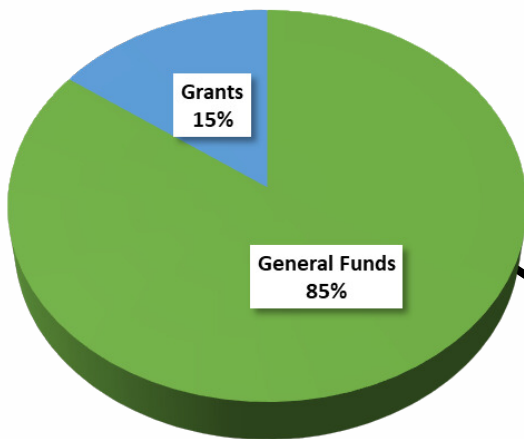


STAFF TOTAL:

12

Effective July 1, 2023

BUDGET:



APPROX. \$11M



DIRECTOR:

SHINGTON LAMY

LamyS@LeonCountyFl.gov
Phone: 805-606-1915
www.leoncountyfl.gov

UNIQUE STRENGTHS

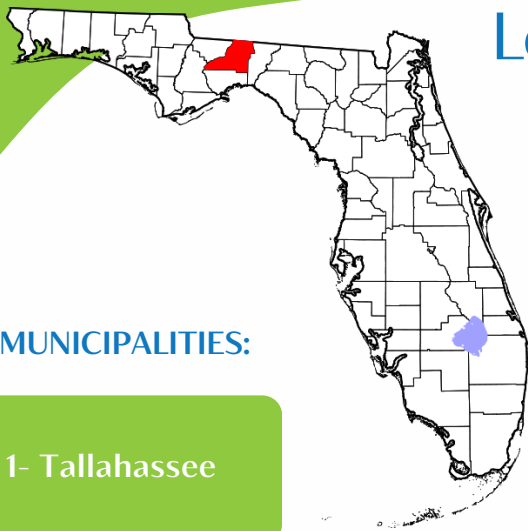
- Canopy Roads
- Capital of Florida
- Town & Gown Community

UNIQUE CHALLENGES

- Only Three homeless shelters that serve the Big Bend Region

Leon County Office of Human Services and Community Partnerships

OUR MISSION: TO BUILD A STRONGER, HEALTHIER COMMUNITY BY PROVIDING A SAFETY NET TO RESOURCES, SERVICES, AND SOLUTIONS FOR CITIZENS IN NEED IN PARTNERSHIP WITH OUR COMMUNITY.



MUNICIPALITIES:

1- Tallahassee

DIVISIONS:

- 1- Primary healthcare services
- 2- Human Services
- 3- Housing Services
- 4- Veteran Services



Population
295,921



Average
31



Poverty Rate
16%



Median Income
\$75,900

[census.gov](https://www.census.gov)

ADMINISTERED GRANTS

Grant:	Granting Agency:	Division:
SHIP	Florida Housing Finance Corporation (Sadowski Trust Fund)	Housing Services
HFA	Housing Finance Authority of Leon County	Housing Services
ARPA	US Department of Treasury	Human Services
ERA	US Department of Treasury	Human Services
City Start	Cities for Financial Empowerment	Human Services
Local Assistance and Tribal Consistency Fund	US Department of Treasury	Human Services

PROGRAMS

Program:	Description:
Homeownership Development Program	The Homeownership Development (HOD) Program is one of the Division of Housing Services' strategies to grow the inventory of affordable housing in Leon County. The HOD Program is designed to provide funding to for-profit and not-for-profit organizations for the development of homes for low-income first-time homebuyers.
Mobile Home Emergency Repair/ Replacement Program	One-time assistance may be awarded to owner-occupied households in need of repair. The County may consider replacing the home if it is found that rehabilitation of the home is expected to surpass 50% of the current value of the home.
Emergency Home Repair/ Replacement Program (Non-Mobile Home)	Funds may be awarded to owner-occupied households in need of rehabilitation or repair related to a dire situation that needs to be mitigated immediately. The County may consider replacing the home if it is found that rehabilitation is expected to surpass 50% of the current value of the home.
Direct Emergency Assistance Program	The Direct Emergency Assistance Program (DEAP) provides emergency assistance with <u>basic necessities</u> such as rent, utilities/fuel, food and medication in an effort to prevent homelessness, malnutrition and disease for citizens meeting eligibility criteria.
Veteran's Emergency Assistance Program	The Veterans Emergency Assistance Program (VEAP) is funded by the Leon County Board of County Commissioners to provide immediate financial assistance, including rental/mortgage, utilities, home fuel, temporary shelter, and transportation to eligible Leon County residents that are veterans and have served a minimum of ninety (90) days in the United States military. The VEAP program provides temporary emergency assistance and is not on-going public assistance.



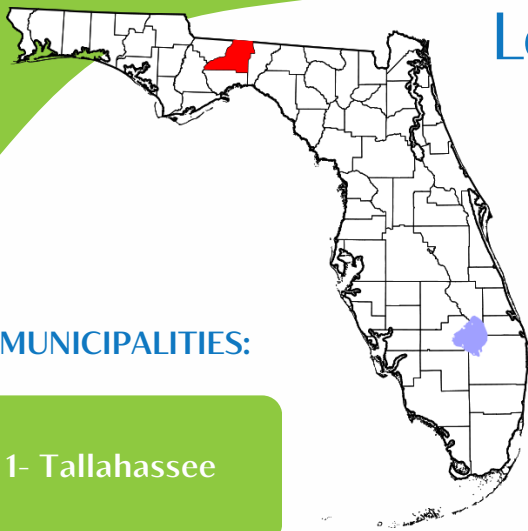
DIRECTOR:

SHINGTON LAMY

LamyS@LeonCountyFl.gov
Phone: 805-606-1915
www.leoncountyfl.gov

Leon County Office of Human Services and Community Partnerships

OUR MISSION: TO BUILD A STRONGER, HEALTHIER COMMUNITY BY PROVIDING A SAFETY NET TO RESOURCES, SERVICES, AND SOLUTIONS FOR CITIZENS IN NEED IN PARTNERSHIP WITH OUR COMMUNITY.



MUNICIPALITIES:

1- Tallahassee



Population
295,921



Average
31



Poverty Rate
16%



Median Income
\$75,900

census.gov

DIVISIONS:

- 1- Primary healthcare services
- 2- Human Services
- 3- Housing Services
- 4- Veteran Services

PROGRAMS

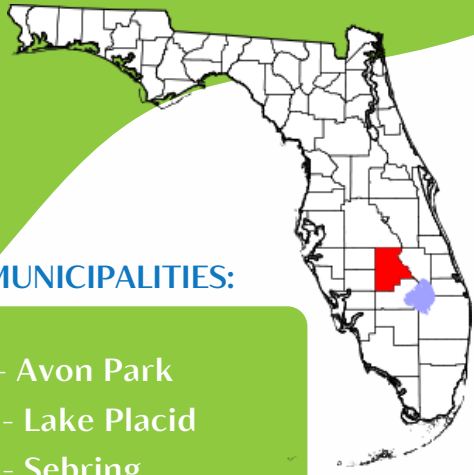
Program:	Description:
Indigent Burial Program	Leon county partners with local funeral homes to provide cremation or burial (depending on the nature of the request) of qualified indigent and unclaimed deceased persons at the County's expense.
Medicaid Match Program	As mandated by state law, the county pays 35% of the cost of hospitalizations for Leon County Medicaid patients with hospital stays extending from the 13 th through the 45 th day. \$55 per month is also paid for each county nursing home resident.
Mental Health Program	As required by State law, Leon County provides matching funds for acute care programs such as: Baker Act, community mental health programs, alcohol abuse/chemical dependency treatment and transporting clients to the State hospital. The County pays 25% of the program costs exclusive of third-party payments, fees, and other local contributions for its indigent residents. The State of Florida funds the remaining 75 percent.
Tubercular Care	The purpose of this program is to coordinate the admission and transportation of indigent tuberculosis patients to a state tuberculosis hospital.
Child Protection Exams	The County pays for examination costs for children who are alleged to have been abused, abandoned, or neglected.



DIRECTOR:

SHINGTON LAMY

LamyS@LeonCountyFl.gov
Phone: 805-606-1915
www.leoncountyfl.gov



Highlands County Community Programs/Human Services Division

OUR MISSION: THE COMMUNITY PROGRAMS DEPARTMENT IS RESPONSIBLE FOR ALL COMMUNITY BASED PROGRAMS AND ACTIVITIES OF THE BOARD OF COUNTY COMMISSIONERS. THE DEPARTMENT IS A COLLABORATIVE HUB FOR RESOURCES (FEDERAL, STATE, LOCAL, PRIVATE AND NON-PROFIT) DESIGNED TO AID ECONOMICALLY DISADVANTAGED INDIVIDUALS AND FAMILIES IN OUR COMMUNITY. STAFF COORDINATES A VARIETY OF ASSISTANCE TO INDIVIDUALS AND FAMILIES THROUGH ELIGIBILITY SPECIALISTS WHO SCREEN FOR AVAILABLE RESOURCES AND PROVIDE NOT ONLY DIRECT SERVICES, BUT ALSO INFORMATION AND REFERRALS TO OTHER AGENCIES.

MUNICIPALITIES:

- 1- Avon Park
- 2- Lake Placid
- 3- Sebring

DIVISIONS:

- 1- Children's Advocacy Center
- 2- Health Families Highlands
- 3- Housing
- 4- Human Services
- 5- Libraries
- 6- Veteran Services



Population
105,618



Average
51.8

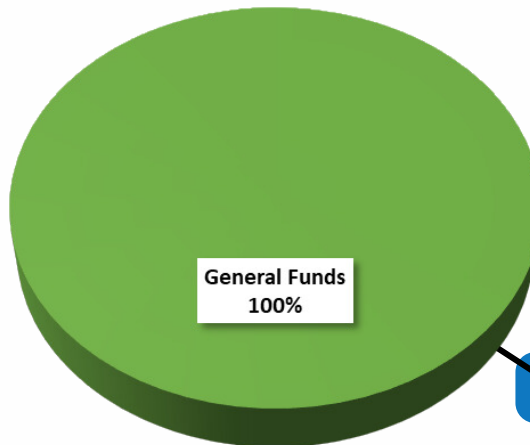


Poverty Rate
15.1%



Median Income
\$43,708 census.gov

BUDGET:



APPROX. \$242K



DIRECTOR:

INGRASHERESE GARDNER

igardner@highlandsfl.gov

Phone: 863-402-6510

www.flaglercounty.gov

UNIQUE STRENGTHS

- Home to South Florida State College
- Cost of living is 15 percent lower than the state average
- Home to Sebring International raceway and 12 hours of Sebring race.

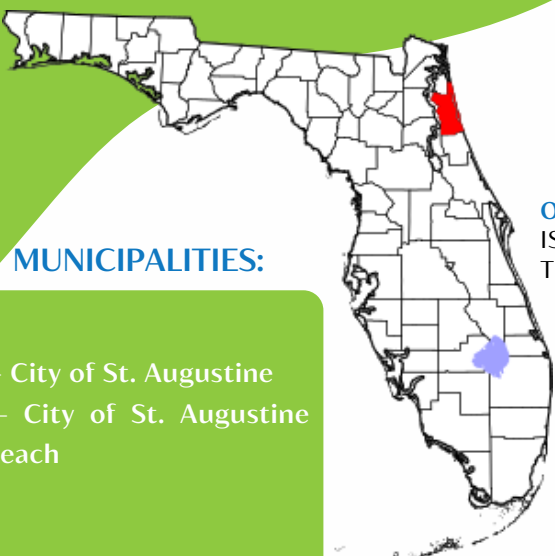
UNIQUE CHALLENGES

- Being known as the best place to retire affects work and lifestyle opportunities available to those who are part of the workforce.
- Being a rural county does limit community resources available to the citizens.
- Specialty health services not available within county boundaries.

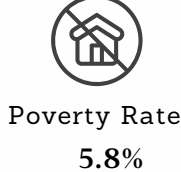
St. Johns County Health and Human Services

MUNICIPALITIES:

- 1- City of St. Augustine
- 2- City of St. Augustine Beach



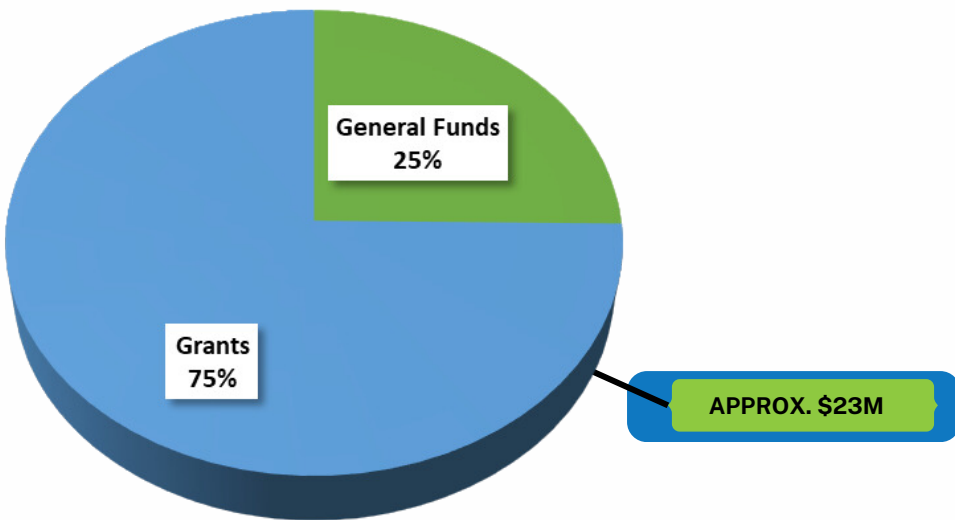
OUR MISSION: WORKING TOGETHER, WE PREVENT HEALTH AND HUMAN SERVICES ISSUES WHEN POSSIBLE, PROVIDE BRIDGE SUPPORTS WHEN NEEDED, AND BUILD TOWARD SELF-SUFFICIENCY AT ALL TIMES.



DIVISIONS:

- 1-Family Integrity Program
- 2-Social Services
- 3-Housing and Community Development

BUDGET:



DIRECTOR:

SHAWNA NOVAK

snovak@sjcfl.us
Phone: 904-209-6089
www.sjcfl.us

UNIQUE STRENGTHS

- Number 1 School District in the State
- Healthiest County in the State
- One of the fastest growing counties in the state and US

UNIQUE CHALLENGES

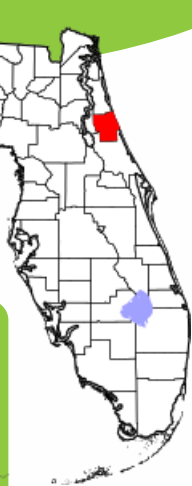
- Affordable Housing
- Lack of Medicaid providers
- Waitlists for behavioral health services

Flagler County Health and Human Services

OUR MISSION: TO PROTECT, PROMOTE & IMPROVE THE WELL-BEING OF FLAGLER COUNTY COMMUNITY MEMBERS, IN PARTNERSHIP WITH LOCAL SERVICE PROVIDERS, BY PROVIDING ESSENTIAL PUBLIC, COMMUNITY AND ECONOMIC SUPPORT SERVICES IN A WELCOMING ENVIRONMENT THAT SUPPORTS SELF-DIRECTED ENGAGEMENT, AND RESULTS IN POSITIVE EXPERIENCES FOR PARTICIPANTS.

MUNICIPALITIES:

- 1- City of Bunnell
- 2- City of Flagler Beach
- 3- Town of Beverly Beach
- 4- Town of Marineland
- 5- City of Palm Coast



Population
126,705



Average
51.8



Poverty Rate
10.5%



Median Income
\$62,305 census.gov

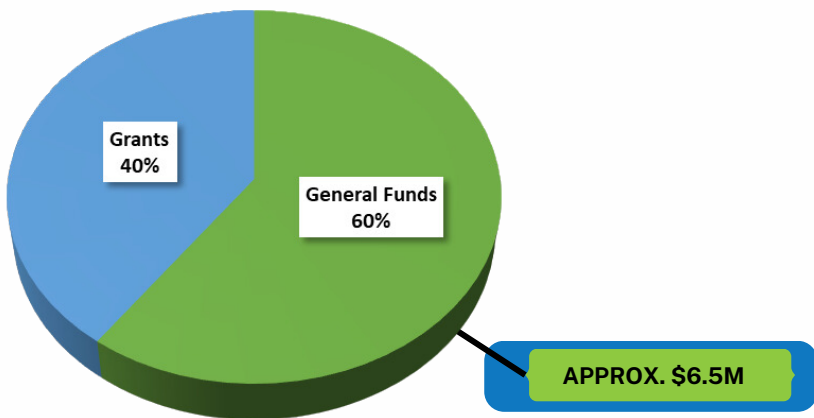
ORGANIZATIONAL CHART

DIVISIONS:

- 1-Human Services
- 2-Senior Services
- 3-Adult Day Care
- 4-Housing Services



BUDGET:



STAFF TOTAL:

41

DIRECTOR:

JOSEPH HEGEDUS

jhegedus@flaglercounty.gov
Phone: 386-586-2324 xt.3626
www.flaglercounty.gov

UNIQUE STRENGTHS

- Beautiful area with variety of outdoor recreation activities, parks, miles of beach, etc.
- Top economic sectors in Flagler County include Tourism, Retail, Healthcare, Administrative, Construction, and Educational Services, with roughly 50,000 county residents in the workforce.

UNIQUE CHALLENGES

- Smart growth, on variety of fronts, as Flagler is one of faster growing Counties in the State
- Dune recovery from storms and addressing flooding tendencies in high rain events.